

**Follow Locaboat Holidays on:**



**Bourgogne  
Saône**



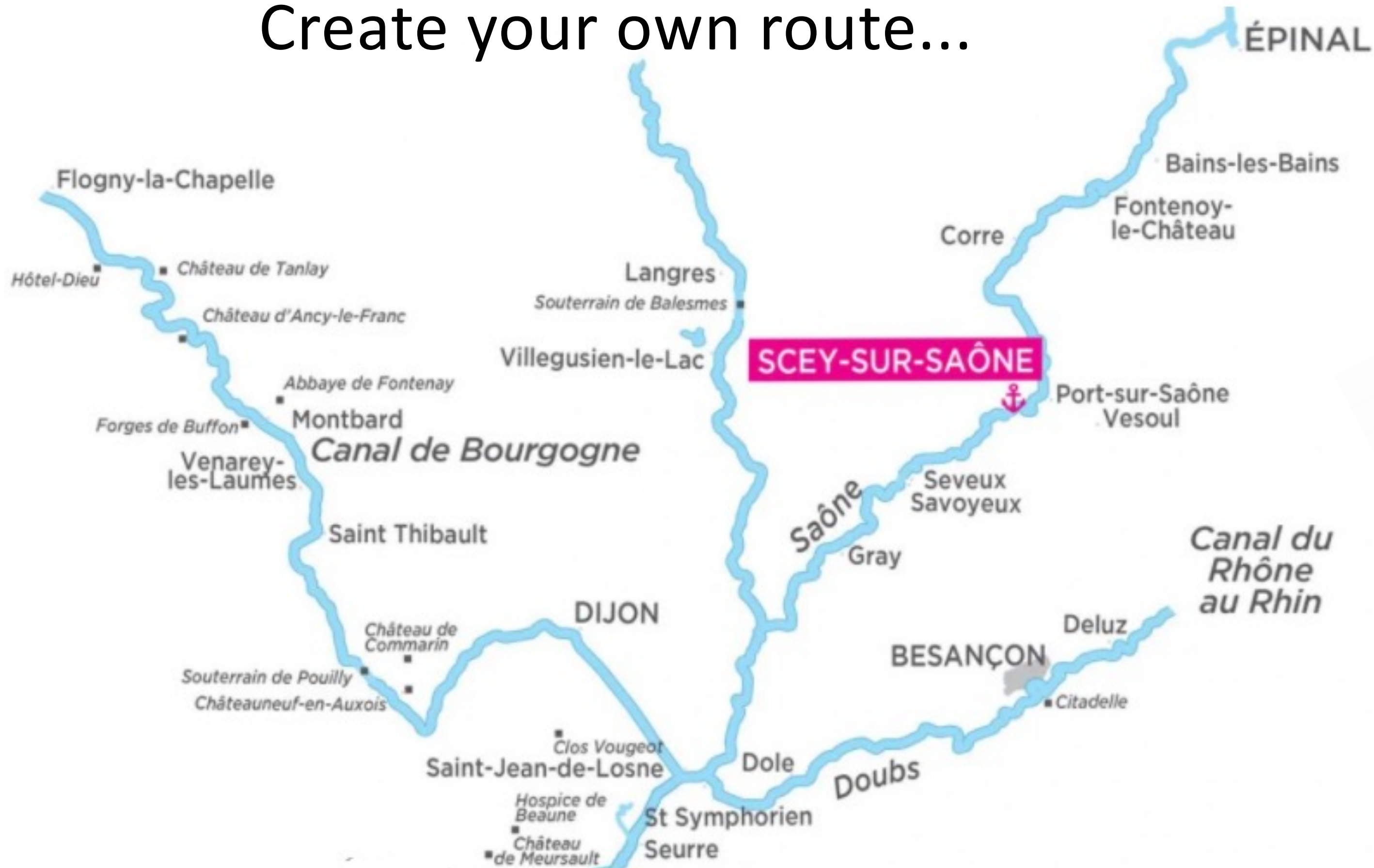
**Navigation Guide**

**LOCABOAT**  
holidays

Helpful tip: download a QRCode App



# Ahoy, Captains! Create your own route...



# The Saône River



Town	Navigation time	Number of locks
Saône (heading north)		
Scey sur Saône		
Port sur Saône	1h45	2
Conflandey	50 min	/
Cendrecourt	2h45	2
Ormoy	1h45	2
Corre	50 min	1
Selles	2h	4
Fontenoy le Château	3h	7
Bains les Bains	2h	6
Epinal	13h15	42

Town	Navigation time	Number of locks
Saône (heading south)		
Scey sur Saône		
Ray sur Saône	2h45	6
Seveux	50min	/
Gray	4h15	3
Pontailier sur Saône	4h30	3
Lamarche sur Saône	50min	/
Auxonne	1h45	1



# The Seille River

Town	Navigation time	Number of locks
Saône (heading south)		
Scey sur Saône		
Ray sur Saône	2h45	6
Seveux	50min	/
Gray	4h15	3
Pontailier sur Saône	4h30	3
Lamarche sur Saône	50min	/
Auxonne	1h45	1
Saint Jean de Losne	4h45	1
Seurre	2h	1
Verdun sur le Doubs	2h30	/
Gergy	1h	/
Chalon sur Saône	2h30	/
Gigny sur Saône	2h45	/
Tournus	1h45	1
La Seille		
La truchère		
Cuisery	1h	1
Branges	3h	2
Louhans	1h	1





# From Scey sur Saône to Besançon

(recommended for a 21 day round trip)

Town	Navigation time	Number of locks
Saône (heading south)		
Scey sur Saône		
Ray sur Saône	2h45	6
Seveux	50min	/
Gray	4h15	3
Pontailier sur Saône	4h30	3
Lamarche sur Saône	50min	/
Auxonne	1h45	1
Doubs		
Dole	5h30	10
Rochefort sur Nenon	1h	2
Ranchot	2h30	4
Saint Vit	1h15	2
Osselle	1h45	2
Avanne Aveney	2h30	4
Besançon	1h30	5





# The Canal de Bourgogne



Town	Navigation time	Number of locks
Saône (heading south)		
Scey sur Saône		
Ray sur Saône	2h45	6
Seveux	50min	/
Gray	4h15	3
Pontailier sur Saône	4h30	3
Lamarche sur Saône	50min	/
Auxonne	1h45	1
Saint Jean de Losne	4h45	1
Canal de Bourgogne		
Brazey en Plaine	1h	2
Dijon	7h	20



# Information about the Locks

On the Sône River, between St-Je are closed Mayan-de-Losne and Mâcon, the locks are automatic and are operated by a lock keeper.

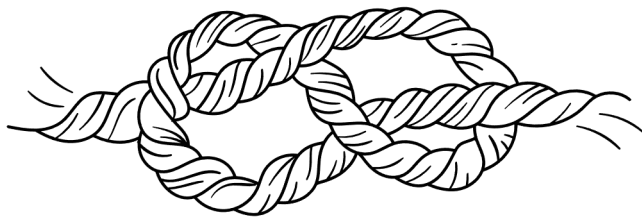
On the Burgundy Canal, the locks are manual and are operated by a lock keeper.

On the Seille River, the locks are manual and are operated by boaters.

Most of the locks in this region are automatic and operated by the boaters themselves; they are triggered by rotating “perche” rod suspended above the stream or by passing in front of a sensor located on the bank

For more information, please see the navigation guide.

Do not hesitate to consult our tutorial at the following link : [www.youtube.com/watch?v=86u8vRiGjKE](http://www.youtube.com/watch?v=86u8vRiGjKE)



LA SAONE : Seurre, Ecuelles, Ormes er Dracé locks	LA SAONE : All other Locks	CANAL DES VOSGES	DOUBS ET CANAL DU RHONE AU RHIN	CANAL DE BOURGOGNE, CANAL DU CENTRE, SEILLE
6h - 21h	9h - 19h	9h - 18h	8h30 - 12h30 13h30 - 18h30	9h - 18h30
Locks are closed on May 1st				Locks are closed May 1st and July 14th (except the Seille River)



# Discovering the Saône River (heading North)

## Scey sur Saône

Here we find one of the most remarkable works of the Saône: the underground canal of St-Albin (681m long). It was ordered by Napoleon to connect the two arms of the Saône River. Stop at the Viking Farm to buy orchard fruit jams home made in a copper cauldron, some honey or some wine. Take a horse or pony for a ride in the park of the old castle of Scey among the wild deer. On site, there is also a mini-farm with goats, rabbits, chickens and even kangaroos, adelight for the children.

This is the perfect place to start your stay!



## Port sur Saône :

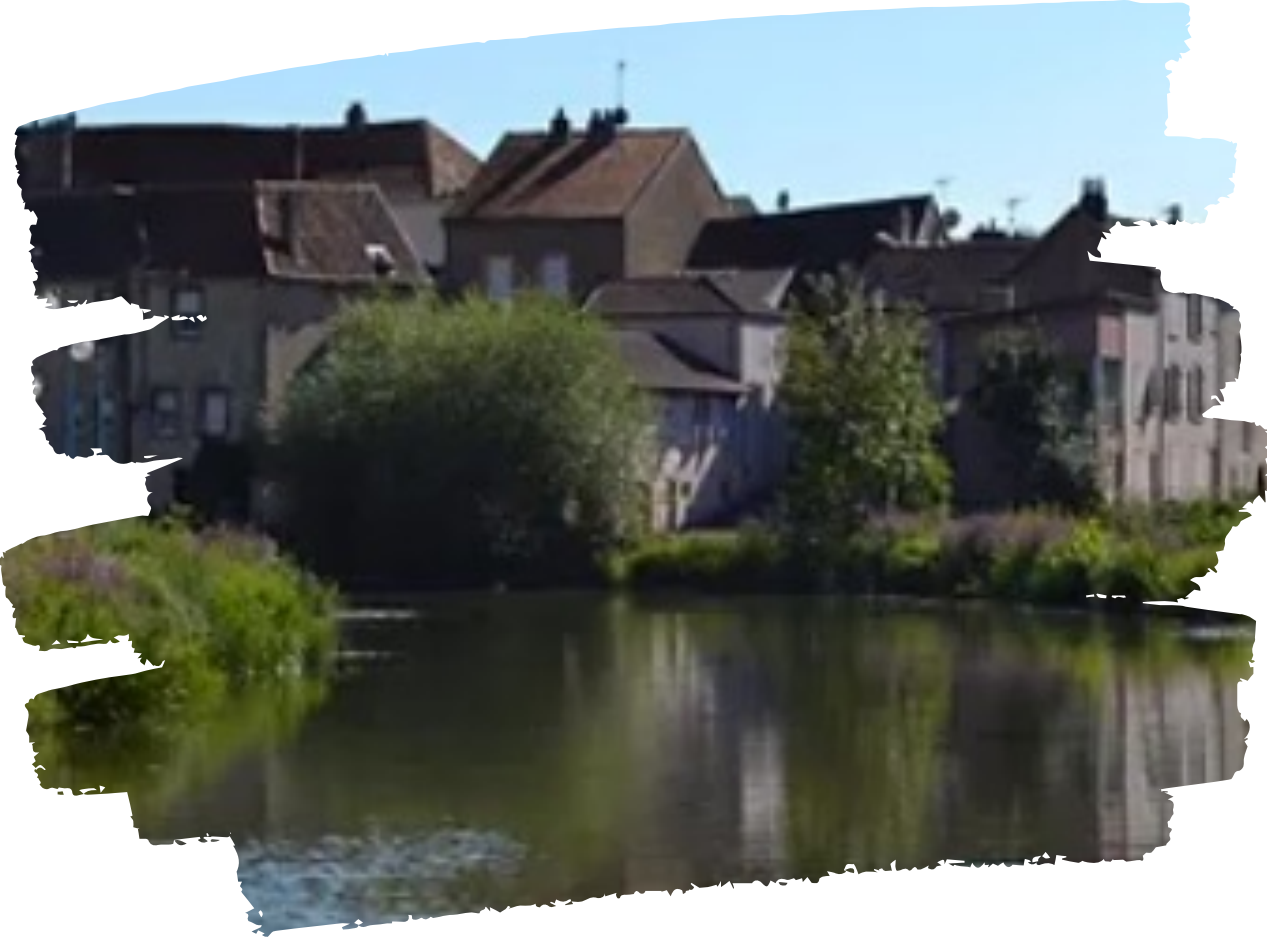
The rich architecture of this town testifies to its ancient past with: the old priory of Cluny, the Hôtel de la Paix which has a very beautiful sculpted gate, and the St-Etienne church. Don't miss the magnificent 18th century bridge. With its 13 arches, it spans the Saône and offers a superb panorama over the river. Next to the marina is the Parc de la Maladière, where several deer families live. Not shy but friendly, they frequently come beging for a few caresses or loaves of bread from visitors.



### Conflandey :

Two nature reserves in wetlands are located on the Conflandey territory. These offer nearly 300 hectares of lakes reserved for fishing and water sports. The town is also a stopover for river tourism, the boats can dock on a small jetty.

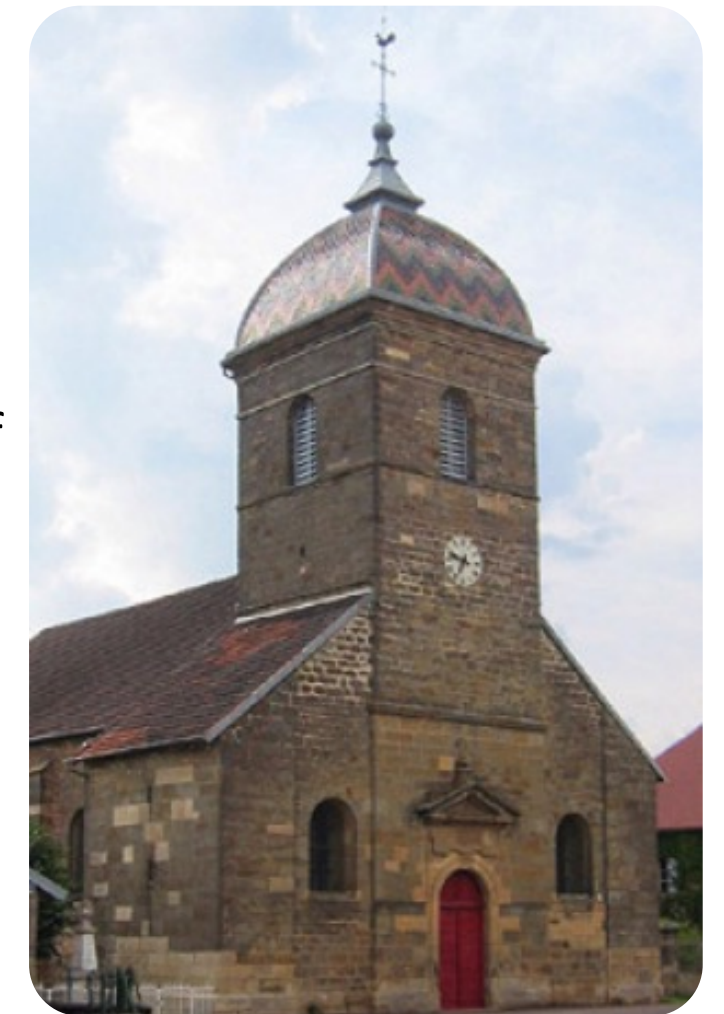
The wire-mills in Conflandey, founded in 1686, are still in operation.



### Cendrecourt :

During World War II, Cendrecourt bore witness to a fight between a Polish regiment and units of the German Wehrmacht Army.

Cendrecourt church was built in the 17th century. It has a square bell tower decorated with glazed tiles, and houses several paintings and statues from the 17th and 18th centuries. At the bottom of the village is a charming, renovated covered washhouse.



### Ormoy:

The village is located on the left bank of the Saône River, about fifty kilometers from its source and at the limit of 3 provinces. It is a large forest town (the forest is still defined with fleur-de-lis markers established since the reign of Louis XIV). Old houses dating from the XVI, XVII, with round or square towers are dominated by a remarkable Comtois bell tower.





## Corre:

Corre is a small French village located in the Haute-Saône department and the Bourgogne-Franche-Comté region. Its inhabitants are called “Corréens and Corréennes”.

The Saône River, the Coney River, the Courbe Saule Stream are the main rivers that flow through the town of Corre.

In this charming little village you will find a bakery and a supermarket to stock up on supplies.



## Selles:

This small village is famous for its swing bridge dating from 1886. Moor at the restaurant to visit the washhouse, its fountain and its old church. Take advantage of your stopover in Selles to stock up on cheese at the Biodéal Roussey cheese and dairy shop, then cycle to the Passavant-la-Rochère glassworks, which has been continuing the tradition of glassblowers since 1475 (free visit).



Swing bridge



## Fontenoy le Chateau:

Look to the skies to discover the ruins of the castle that once dominated this town. In the center of the village, the Tour des Lombards is the last witness to the fortifications with which the town was equipped in the 14th century. The Museum of Embroidery, Metallurgy and Heritage offers a glimpse of the town's artistic past.

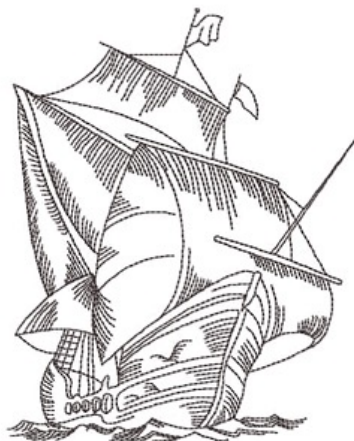
But it was at the end of the 19th century and the beginning of the 20th century that this town gained international fame. At that time, it was a Mecca of Embroidery. The Museum of Embroidery, Metallurgy and Heritage displays unique pieces made by some 500 embroiderers in Fontenoy-le-Château at the time.



## Bains les Bains:

Bains-les-Bains is a former French commune of Lorraine, located in the Vosges department. On January 1, 2017, it merged with Harsault and Hautmougey to form the new commune of La Vôge-les-Bains.

Since the Roman times, the thermal baths of Bains-les-Bains have promoted health and well-being. In a magnificent wooded park is the thermal center offering mini-cures, ideal for people passing through who wish to be pampered for a day.







FILM NEGATIVE



FILM NEGATIVE

## Epinal:

Nestled in the hollow of the Vosges, Épinal is known for its famous colorful printed imagery.

Open all year round, on the “Cité de l'Image” site, near the Epinal port, the “Imagerie d'Épinal”, still in operation since 1796 and the Musée de l'Image, are the ambassadors of what has made the town famous for centuries: the printed images.

Discover the story of designer Jean-Charles Pellerin. The town center is organized around the charming Place des Vosges lined with Renaissance houses and an 11th century basilica.

On the heights of the town, take a stroll in the pleasant park of the medieval castle, with its ruins, its terraced orchards, its rose garden, its animal park and its children's play area.



FILM NEGATIVE



FILM NEGATIVE



# Discovering the Saône River (heading South)



## Scey sur Saône :

Here we find one of the most remarkable works of the Saône: the underground canal of St-Albin (681m long). It was ordered by Napoleon to connect the two arms of the Saône River. Stop at the Viking Farm to buy orchard fruit jams home made in a copper cauldron, some honey or some wine. Take a horse or pony for a ride in the park of the old castle of Scey among the wild deer. On site, there is also a mini-farm with goats, rabbits, chickens and even kangaroos, a delight for the children.

This is the perfect place to start your stay!



## Ray sur Saône :

Stop by Ray-sur-Saône to discover its Gothic church, its wash house, its mill, and its many old houses including the Maison des Moines dating from the 16th century. Overlooking the village, the 10th century castle and its wooded park offer an exceptional panoramic view of the Saône valley. The castle houses a small, wooden chest which may have contained the shroud of Christ. It is currently being appraised. To ascend towards this village, navigate slowly and respect the markings to avoid any risk of stranding







## Seveux:

The inhabitants of Seveux-Motey are called “ Ségobodiens and Ségobodiennes”. Before becoming a village of a mere 500 souls, Seveux-Motey was one of the main towns of Sequanie, formerly Franche-Comté. It is located on the banks of the Saône and is a delight for fishermen. More than half of the municipal territory is occupied by a forest, which forms a solid massif. The wooded forefront forms a landscaped background which frames the alluvial plain, offering a certain privacy from Seveux . The alluvial plain also offers something for those with an interest in fauna, with three heritage species: the ash curlew, the sand martin and the stag beetle.

## Gray :

This town is worth a visit on foot, either alone or guided by the Tourist Office. Discover its remarkable architectural heritage: the basilica, the castle, the Italian theater, the Town Hall with its glazed tile roof, the sundials, as well as the narrow and steep streets that lead to the lower town. The Baron Martin Museum of Art and Archeology has a rich collection of paintings and sculptures ranging from the Middle Ages to the beginning of the 20th century. There are activities for the whole family here: horse riding, canoeing, and a swimming pool with its grassy beach. On the other side of the Saône, opposite Gray, is Arc-lès-Gray. Take a walk or have a picnic in Lamugnière Park and discover its cave, greenhouse and orangery.





## Pontailier sur Saône:

This “green” nature station is situated at the confluence of the Saône, the canal between Champagne and Burgundy, the Albane, the Bèze, the Vingeanne and the Ognon. Pontailier-sur-Saône and its marina are a good place for fishing, swimming, water sports and walking or cycling along the “Voie Bleue (blue path)”. Things to see: the heart of the village located on a peninsula surrounded by the Saône and the Vieille Saône, the 18th century Saint-Maurice church, and the statue of the Virgin Notre-Dame du Mont Ardoux with a panoramic view of the plain of the Saône and the Jura mountains ...

The Saône river offers an exceptional natural setting, conducive to the development of local flora and fauna. To learn more about the flora and fauna discovered along the water during your boat vacation, visit the House of Water, Fishing and Nature.



## La Marche sur Saône :

This is a quiet village in the Val de Saône, distinguished by the vast expanse of its territory. Located about thirty kilometers from Dijon and Dole, the village has been particularly well endowed by Mother Nature.

Nestled on the right bank of the warmest river with the most fish in France, this village is a fisherman's paradise.

The ponds away from the village offer nature lovers exceptional flora and aquatic fauna. All senses will be awakened. The silence is only broken by the inimitable cries of the herons who go hunting or by the somersault of a carp which greet the first light of day. Ducks, moorhens, grebes, and majestic swans in their beautiful white dresses populate the surface of the water. In the town, the two towers of the 19th century Church reign proud and haughty over the tranquility of the village and its inhabitants.







## Auxonne

Auxonne is a town with a privileged geographical location, which makes it an essential point for discovering the Burgundy Franche-Comté region. Chief town of the canton, it is a former stronghold, with a historical heritage suggesting a prestigious military past, thanks in particular to Bonaparte's stay, who later became French Emperor. You will find a museum dedicated to the emperor in the castle.

Auxonne is all the more dynamic, as since June 1956, it has welcomed the 511th Train Regiment which belongs to the first logistics brigade, a large command unit of the Land Logistics Force.

If you take the time to walk the streets, visit the Notre-Dame church which dominates the town center with its square bell tower and slate spire, or to take advantage of its lake and the nautical activities proposed there. This town knows how to allure you and will give you, if you pass through, the desire to come back, or to stay.





## Saint Jean de Losne :

A small town located at the crossroads of different waterways, St Jean-de-Losne is the first river port for pleasure boats in France. The Maritime Museum retraces its important past.

The town boasts the status of “historic city” as evidenced by the 16th century church of St-Jean-Baptiste which is covered with polychrome glazed tiles in the purest Burgundy tradition. Feel the rhythm of the horses' hooves on a horse-drawn carriage ride through the town center, along the wharfs and around the shipyard, or make an escape to the renowned Nuits-Saint-Georges vineyards.



## Seurre :

Due to its geographical position, Seurre has long remained a border town and a stronghold of the French kingdom.

Seurre boasts a rich historical heritage that you can discover thanks to the heritage trail of Jacquemart, showcasing essential places such as the Hôtel Dieu, the Maison des ancêtres de Bossuet, the Saint-Martin church, the museum full of 'Étang Rouge ... Don't forget the English garden, and the Saône riverside ... These places will reveal the history of the town, anecdotes or adventures facing the numerous bridges.





### **Verdun sur le Doubs :**

Nestled at the confluence of the Saône and Doubs rivers, Verdun-sur-le-Doubs was founded as a river port by the Romans. There are plenty of charming houses to admire in the town center. Take a walk in the park of Île du Château, accessible by a footbridge, then stop at the Bread and Wheat Museum to learn about the history of the harvests, bread-making and milling.  
Do not miss tasting the region's specialty: Pôchouse, a river fish soup in a white wine sauce.



### **Gergy :**

If you stop in Germy, take a stroll to St-Germain Church.  
For a relatively modest country church, the sculpture and ornamentation are a real treat. The Meix Lantin cheese and dairy shop sells exquisite goat cheese. Bourgogne Jeep Découverte offers you a unique experience: drive a vintage Jeep through the Beaune vineyards accompanied by a guide who will comment on the beauty of the landscapes (flash the code for more info).

### **Chalon sur Saône :**

Architecturally, Chalon-sur-Saône is a feast for the eyes! The town center is full of half-timbered houses, towers and turrets, fortifications and bastions from the 16th century. Among the must-sees are the St-Laurent Island Hospital and its chapel, as well as the 15th century Episcopal Palace. The beautiful cathedral square is lined with cafes, restaurants and antique shops. The fascinating museum dedicated to the inventor of photography, Nicéphore Niépce, displaying the first cameras and the first color photographs.

In 2015, Chalon promoted its architectural heritage with the creation of the Chemin de l'Orbandale, a walking trail to discover the essential treasures of the town center. The trail is accessible at all, simply by following the marked arrow seals on the ground.

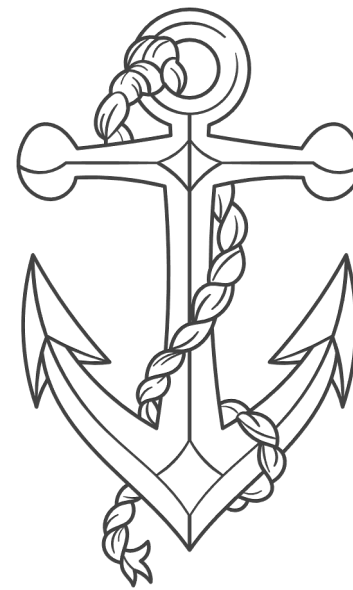




## Gigny sur Saône :

5 km east of Sennecey-le-Grand, this village has lived to the rhythm of the Saône River since its origin: an ancient port from Roman times, then shifted to water coaches until the creation of major highways, and it is now frequented by river tourism thanks to the development of an old lock house which has become a popular nautical stopover (restaurant, pontoon, boat rental).

A little further in the hamlet of Epervière you will find a castle hosting a 4-star campsite, and a 19th century neo-Romanesque parish church.



## Tournus :

From the river, let yourself get carried away by the charming, steep and picturesque streets lined with 16th century houses.

On the heights of the town is the St-Philibert Abbey, a true masterpiece of Romanesque art. Discover a unique collection on the evolution of cycling over the centuries at the Bicycle Museum. More than a simple shop, the “Caves de Vignerons de Mancey” cellar is a true initiation and cultural journey around the various Burgundy appellations and grape varieties. You have the opportunity to participate in a wine tasting with commented explanations.





# Discovering the Seille River

## La Truchère :

The Seille river is a nature lover's paradise and La Truchère is the first stop.

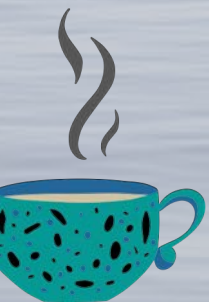
The nature reserve offers an astonishing diversity of natural environments with its sand dunes, its forest and its marshy pond. Two freely accessible hiking trails let you explore this landscape.



## Cuisery :

On your way to Cuisery, stop at Ratenelle if you want to visit the Ferme du Champ Bressan. This 1930 farmhouse has not changed for 80 years (located 5km from the Romenay mooring).

Cuisery boasts ten bookstores and is one of the four “Book Villages” in France. Espace Gutenberg explains and demonstrate old fashioned printing. From the top of the hill where the village lies, admire the view over the Bresse valley. The Biscuisery mill, by the river, invites you at tea time for a relaxing break.







### **Branges :**

Welcome to Branges, a quiet and peaceful town with a dominating 14th century church. Branges extends on both sides of the Seille River from the neighboring Jura.

There's a myriad of shops in the village: 2 bakeries, a tobacco shop, a butcher-caterer, a mini-market, an eyewear optician, a hairdressing salon,

...

Take the opportunity to cycle along the banks of the canal and explore the area. You can also have a drink on the terrace at the village bar.

### **Louhans:**



At the last stop of the Seille, visit Louhans before turning around. The town has a very beautiful church with its bell tower adorned with glazed tiles, and is characterized by its old archways which house many shops. The Monday market is a not to be missed event, with its quite famous cattle fair which takes place at Place du Champ de Foire, well known far beyond this charming little town. Taste Louhans' specialty: Corniottes, sweet little pastries.







# Discovering the Doubs River



## Dole

Take advantage of Dole to stock up on provisions before heading east on a more natural course with little infrastructure. The town is worth exploring on foot. The imposing Notre-Dame collegiate church dominates the town. Along the Canal des Tanneurs, the Pasteur Museum presents a comprehensive view of the life and work of the most famous French scientist within the walls of his birthplace. A multitude of restaurants and small shops invite you to taste the specialties of the region or to browse and find antiques. Acro Isis adventure center offers an acrobatic course in the trees within the park of the Château de Crissey, near the Aquaparc Isis aquatic park.

## Rochefort sur Nenon:

The village offers a preened environment in a remarkable setting, whether on the banks of the Doubs overhung by cliffs that excite rock climbers, or on the esplanade of the old castle from where one can enjoy a splendid panorama on the valley as well as the village of Gros Buisson, which opens onto the immense Chaux forest.





## Saint Vit :

Stop here to stock up on provisions at the supermarket and to explore the Osselle cave (3km from the mooring). Admire the variety of its crystallizations and its exceptional colors, its stalactites, its stalagmites and other geological curiosities.

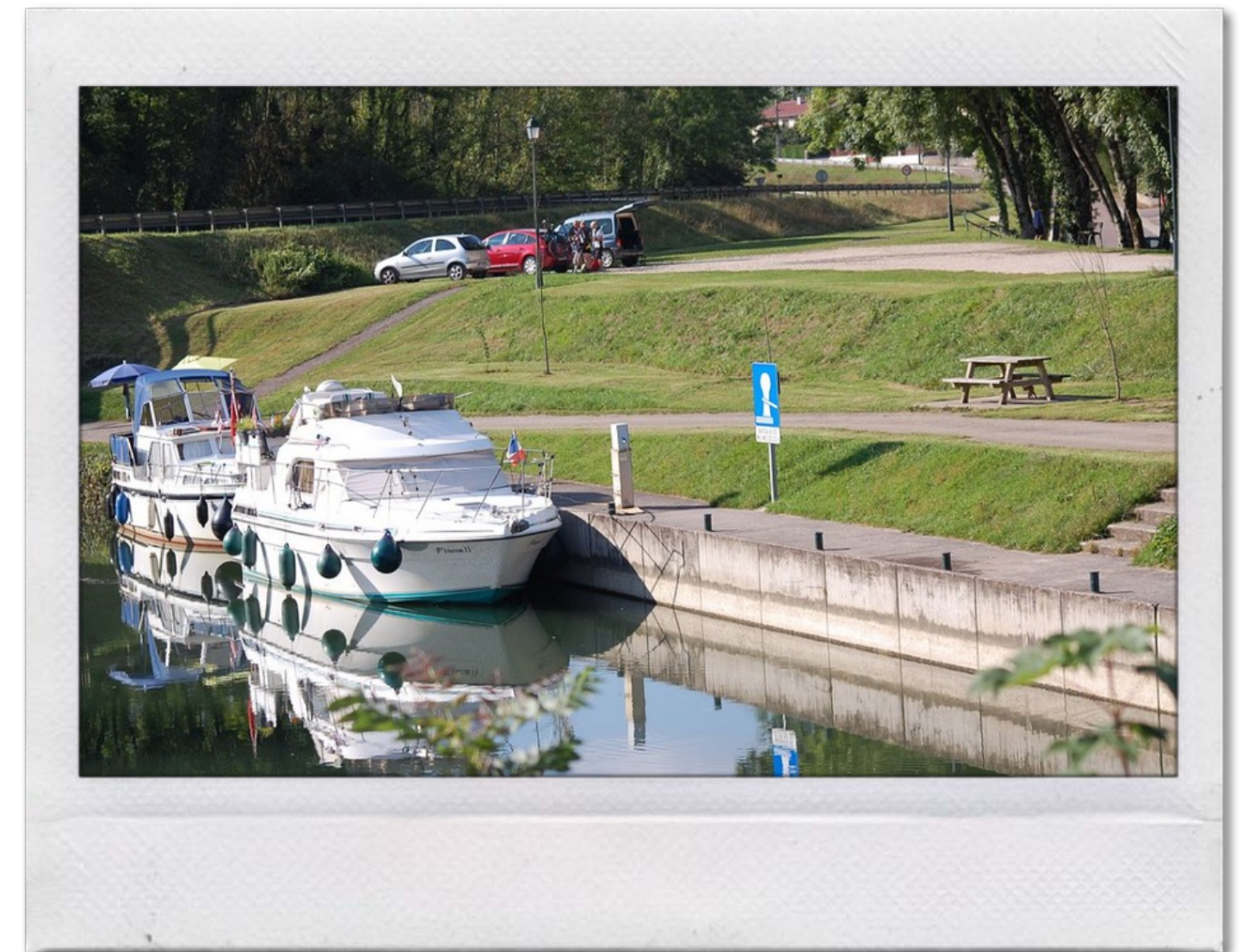
Near the Doubs river, there is a lake with a sandy beach, a slide, a children's play area as well as volleyball and "pétanque" courts.



## Osselle:



At the Osselle lock on the Rhône-Rhine canal, moor your rental boat to reach the Osselle Cave (3 km). The largest European necropolis of cave bears, this cave astonishes with its magical setting of stalactites and stalagmites in changing colors. A must-see during those hot summer days (but cover up, as the interior temperature rarely exceeds 13 degrees!).





## Avanne Aveney :

Take a Nature pause in Avanne-Aveney at the Woka Avannne nautical base. Unique in Franche-Comté, an "Eco Pagayeur"(eco-paddler) water course has been created to allow you to descend the Doubs by canoe-kayak on an 8 km loop, discovering the surrounding nature with the help of an audio guide.

The vines were one of Avanne's main resources for a long time, especially until the 18th century. There are many traces of this past, with old houses boasting vaulted cellars.

The last tower of the castle of Avannes collapsed in 1816. Of the Castle's existence, only a few steps, a section of a wall and foundations remain.



## Besançon :

Besançon, the “watchmaking city”, is a lovely place. You can get to the port via the Doubs loop or by taking the underground passage below the hilltop of the citadel.

The port is located at the foot of the City of the Arts, a building that houses a contemporary art center. Visit to the Museum of Fine Arts which houses works by Courbet and Matisse, among others. You can also discover Besançon on a guided tour aboard a little tourist train. The citadel of Besançon, a UNESCO World Heritage Site, is perfectly preserved and turns out to be, along with St-Jean Cathedral and its astronomical clock, one of the town's principal points of interest. The citadel also houses three museums and a zoo. While crossing the Doubs, stroll through the old Battant district and climb up to Fort Griffon to enjoy a breathtaking view of the town





# Discovering the Canal de Bourgogne



## Brazey en Plaine :

Magnin Park, boasting many rare tree species, is a little gem in the middle of this village. The Le Galopin equestrian center (+33 (0) 3 80 29 88 59) offers horse and pony rides, for beginners or amateur riders. And for those who prefer to let themselves get carried away, climb aboard a carriage for a ride through the woods.



## Thorey en Plaine:

The town has installed a stele memorial in memory of 7 airmen (6 Canadians and one English). After having been attacked three times by German fighters on their outward journey. It was upon returning from a bombing mission over the town of Stuttgart that they were shot down by the German DCA on the territory of the municipality of Thorey-en-Plaine, in the Côte-d'Or department, at a place called "Bois du Roy"





## Dijon :

**The Dijon Owl : a good  
luck charm and the town  
emblem**

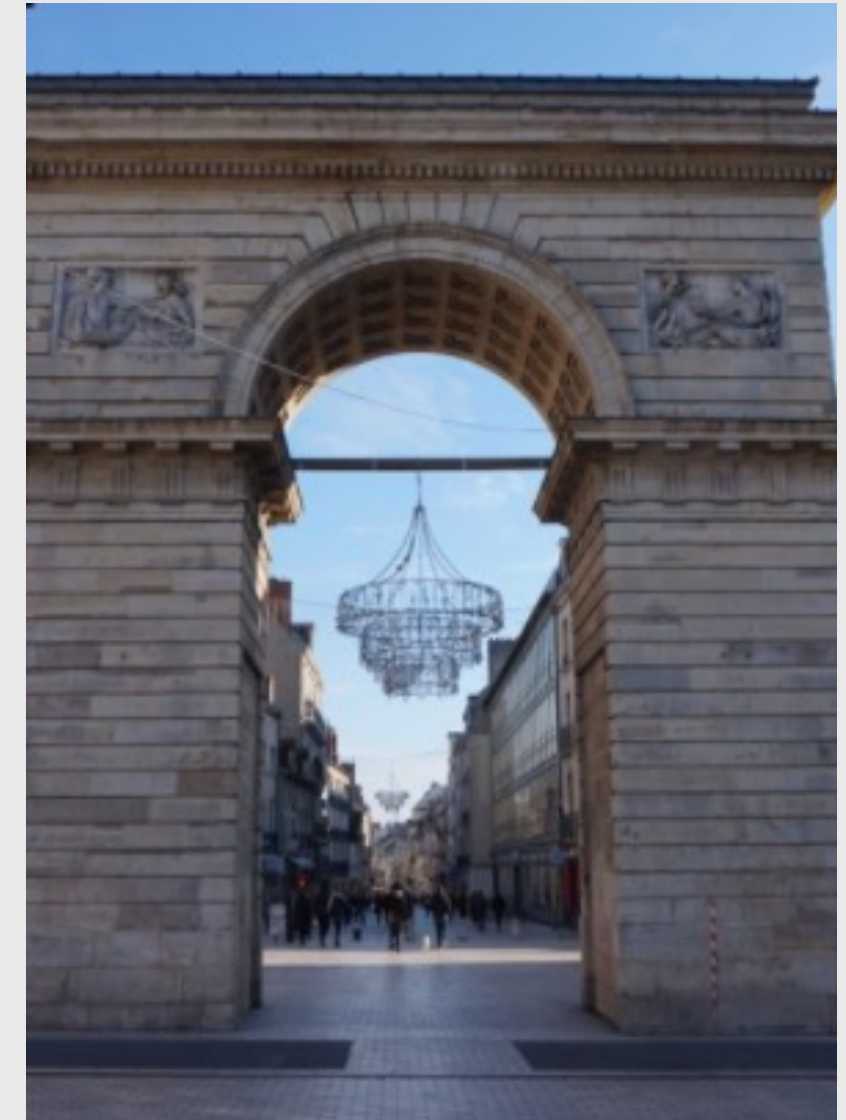


Dijon is the capital of the majestic region of Burgundy. This “ville aux cent clochers” (town of a hundred bell towers), as the French nicknamed it, has been shaped by a very rich past, and is considered one of the most beautiful towns in France.

The Palace of the Dukes of Burgundy is a true architectural gem located in the heart of Dijon, and today houses the Museum of Fine Arts. Nearby, you will discover other gems such as Notre-Dame Cathedral, St-Michel Church and Les Halles. Climb the 316 steps of the Philippe le Bon tower for a breathtaking view of the town and its surroundings (by reservation at the Tourist Office).

Allow yourself plenty of time to wander the busy streets, sit on the terrace at one of the many cafes, or shop in the chic boutiques.

The Tourist Office also offers one-hour Segway rides to discover the town in a different way.





# Quick History Points:

## La citadelle de Besançon :

Built over three centuries ago by Vauban, the Citadel of Besançon is considerably one of the most beautiful citadels in France. Its ramparts nearly 600 meters long, 5 to 6 meters wide and 15 to 20 meters high, perched on a rocky precipice and offering unique panoramas of the town and the exceptional natural setting that surrounds it.

To learn more about it, flash the code



## Bonaparte “cut his teeth” here !

Napoleon Bonaparte's stay in Auxonne was during a period when he learned the essentials of his military profession and when he forged the bases of his intellectual training at the Royal Artillery School. This stay is commemorated by a statue representing him as a young man in the uniform of an artillery lieutenant which he wore at that time. The statue of Lieutenant Bonaparte has been enthroned in the middle of the Place d'Armes, in Auxonne, since December 20, 1857.

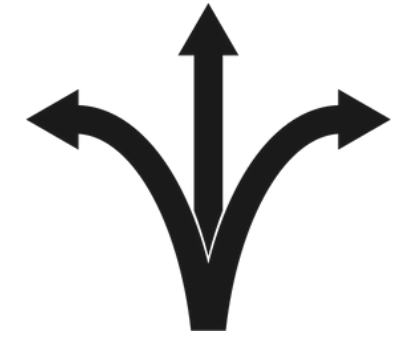
More information by flashing the code..





Our base

## Scey sur Saône



### **Locaboat Holidays**

Port de Plaisance de Scey-sur-Saône

CHASSEY LES SCEY, FR 70360

✉ scey-sur-saone@locaboat.com

Tel: + 33 (0) 3 84 68 88 80

GPS: N 47° 39' 8.78" – E 5° 58' 27.05"

### **Access to base :**

- From West and South : A36 – E60 exit 4 Vesoul Besançon Saint Claude, then N57 in the direction of Vesoul direction D1 direction Cussey and follow D3 (50 km)
- From the East : A36 – E60 exit 11 Vesoul Héricourt, N1019 + D438 + N19, after Vesoul turn left on D23 toward Scey sur Saône (83 km)
- From the North : A31 – E21 exit 7 Vesoul, then N19 – E54 + D3 (70 km)
  - Vesoul Regional Rail Station (21 km)
  - Bâle-Mulhouse Airport (150 km)