

# Locaboat Holidays on Social Media



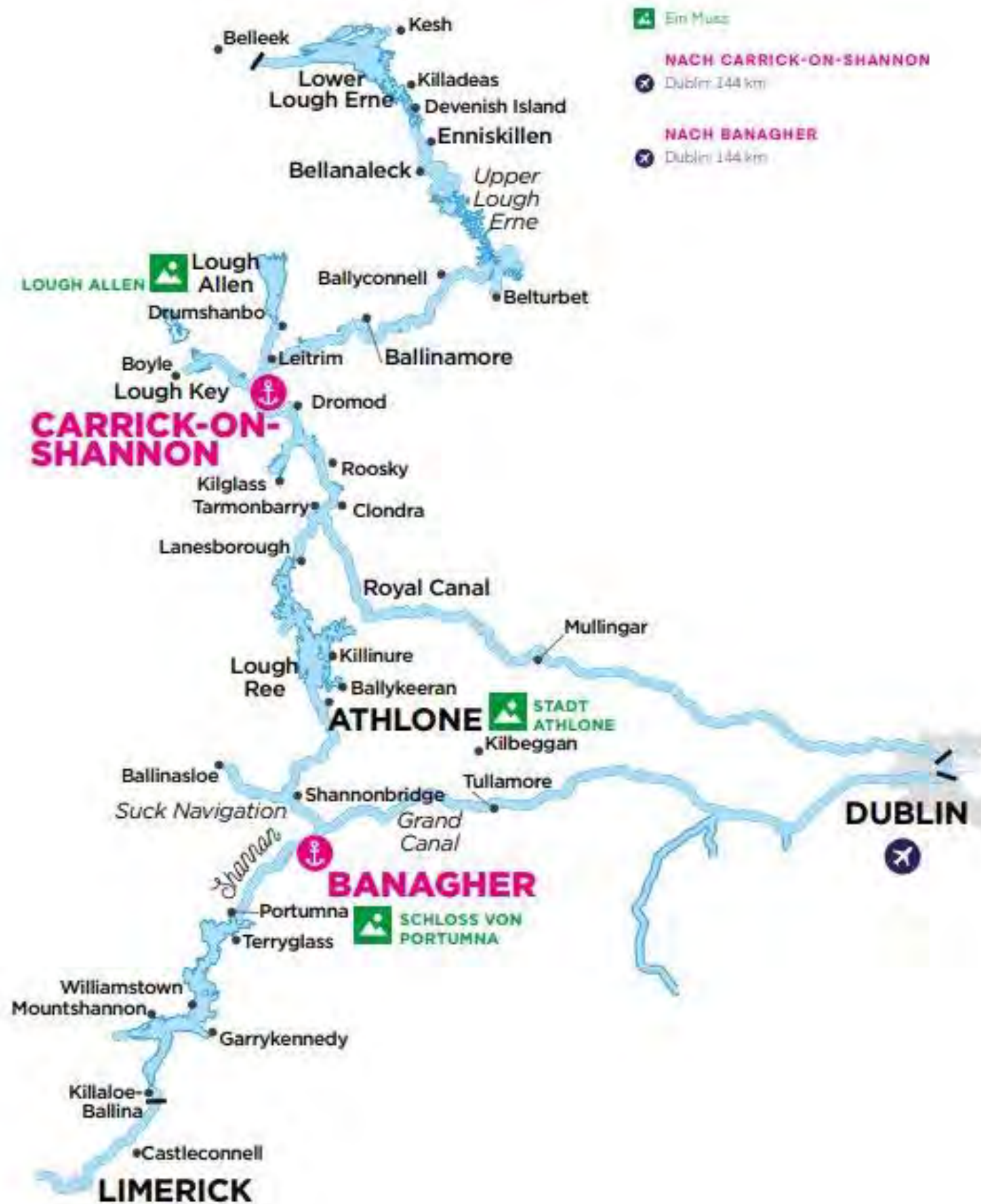
Ireland



Navigation Guide

**LOCABOAT**  
holidays

Helpful Tip: download a QR Code App



Ahoy, Captains!

Create your own route and visit places according to your preferences! To assist you, we offer you travel times between the places in this guide as well as some helpful tips, interesting information and places worth visiting.....so you can steer your boat to the most beautiful and interesting corners of Ireland!



# Navigating instructions for Ireland



## Locks and bridges

- There are only 9 locks and 3 drawbridges on the Shannon River and its tributaries. Each is operated by a lock keeper who will be happy to take the ropes and put them around the bollards. In most cases, a lock fee of € 1.50 must be paid directly to the lock keeper, and the drawbridges also have a fee of € 1.50 when operated. Make sure you have enough change during your trip on the Shannon River.
- The Shannon-Erne Canal, which leads to Northern Ireland, has 16 locks, most of which are connected in regular sections. The locks are operated with a rechargeable smart card. You will receive the smart card directly at the port. As a rule, there is no lock keeper on site, so you will receive your briefing and instructions directly at the port when you arrive or at the first lock on the Shannon-Erne Canal.
- Should you have any issues, there's always have a call system nearby.
- There are no locks or drawbridges in the Erne waterway.

# Navigating Instructions for Ireland



## Ports, moorings and anchoring

- Mooring in the numerous harbors (marked as a green buoy/float on the waterway map) is free of charge. There are a few exceptions such as the city port in Athlone. Charges apply to electricity, water, various port facilities or the pumping of dirty water. A Smart card is often required for these purposes.
- There are also some footbridges along the way that are equipped with bollards/posts. These are very often embedded in nature or close to points of interests.
- The banks of the Shannon are often covered with thick reeds. You should not try to moor here or get too close. The risk of running aground is particularly great when there is wind as there are also sandbanks near the shore.
- Do not moor too close to the bridges or locks
- Anchoring is only allowed during the day in Ireland. Please seek instructions at the harbor since it can also be very windy on the Shannon, so special precautions need to be taken when anchoring and navigating.



# Navigating Instructions for Ireland

## Swimming

Since the Shannon and the Erne rivers dispose outstanding water quality, the waters are suitable for swimming. Of course, due to the climate conditions in Ireland, it can be more of a brave jump into quite chilly waters rather than a welcome cooling off. Perhaps you catch some warmer and sunnier days to take a dip.



## Fishing

The waters are rich in fish stocks, such as salmon, trout, bream, tench, common roach and perch, which are particularly good here. Pike are particularly common in the area around Banagher. You don't need a fishing license for the Shannon, but you do need a special fishing permit for salmon and trout fishing. The season for these two fish species is differs by regions. In Northern Ireland, on the other hand, amateur anglers need a fishing permit. The protection of fish stocks is particularly important in the Republic of Ireland, therefore strict rules apply here. Please familiarize yourself with the rules before your boat trip.



## Dinghies

In Ireland you can also rent a dinghy. There are dinghies that are equipped with oars or motors. These boats are recommended for anglers, bird watchers and nature lovers. For example, you can explore small islands or go ashore in particularly beautiful places. Pay particular attention to your dinghy in locks and during turning maneuvers. Transporting people in a dinghy while your boat is moving is not permitted.

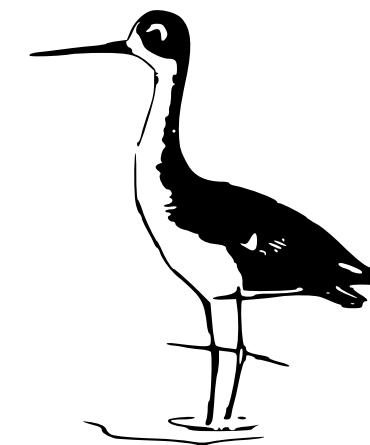
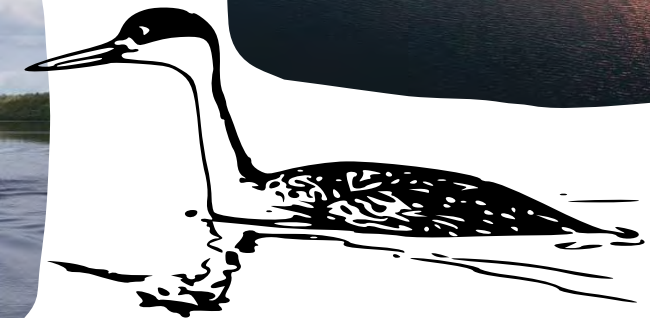


# Navigating Instructions for Ireland



## Waterways

- A total of 750km of waterways lie between Limerick and the northernmost lake in the Erne area. Not all of these waterways are navigable with all types of boats. A real insider tip is the trip on the Camlin River. The river branches off between Corlehan Bay and Tarmonbarry and can only be navigated with small boats. Ask at the harbor whether your boat is suitable or not for certain waters.
- The route is marked by green and red signs. Please also pay attention to the white marked fairway using the waterway map. There are often shallow spots with rocks or sandbars that you can run into quickly. In the wind you should cruise carefully and with caution so as not to be driven to the edge.
- Pay special attention to the wind when crossing larger lakes. During any storm you should wait until the wind has subsided. If you cannot assess the situation yourself, call your base and ask for advice. There can be rough seas, especially on Lough Ree, which can be dangerous for you and your boat.
- It is advisable to wear a life jacket outside on deck. For children and adolescents up to the age of 16 life jackets are mandatory outdoors.



# Route suggestions & Travel times



In the following booklet, you will find route suggestions to help you plan your route. Please note that we are not liable for the accuracy or changes to travel times. You are welcome to use these suggestions, adapt them according to your own preferences or put together your own route using the navigation time tables. The port will be happy to help you with this. The suggested routes are all for a one-week journey. Short breaks from Carrick-on-Shannon and Banagher can always be found at the end of the navigation guide. To not miss the most beautiful corners and sights, you will find introductions to the area and points of interest in more detail! This is the best way to start your adventure! The exact tour descriptions can be found from page 14.

# Explore the Shannon and Lough Ree from Carrick-on-Shannon - Southern Tour



A popular tour sure to take you to the most beautiful corners of the Shannon River! You will encounter lots of unspoiled nature and many lakes on your way to Athlone and back to Carrick-on-Shannon. Your trip can also be spiced up with a detour to Lough Key. This lake is north of the home base. You can determine your stays and travel times yourself. The trip overview will assist you with this. The navigation time is given from place to place. For example, the navigation time from Carrick-on-Shannon to Dromod is 3 hours and from Dromod to Kilglass 2 hours. The tour description can be found from page 15.

Town	Navigation Time	Locks/Bridges
Shannon and Lough Ree		
Carrick-on-Shannon		
Dromod	3 hours	1 Lock
Kilglass	2 hours	
Roosky	1 hour	
Lanesborough	4 hours	1 Lock, 1 bridge
Portrunny	1 hour	
Glasson	2 hours	
Athlone	1 hour	1 Lock

# Experiencing authentic Ireland from Carrick-on-Shannon - Northern Tour



There are a few more locks to pass on the northern tour, but the effort is rewarded with breathtaking nature! The waterway consists of small rivers and lakes that meander picturesquely through a lush green, pristine and typically Irish landscape. You won't make it directly to the Erne in Northern Ireland in a week, but the route not only gives you magical landscapes, but the waterway is also very rich in history. Each lock on the Shannon-Erne-Waterway takes about 15 minutes. Full tour description can be found from page 21.

Town	Navigation Time	Locks/Bridges
Carrick-on-Shannon - Northern Tour		
Carrick-on-Shannon		
Leitrim	1 hour	
Keshcarrigan	7 hours	8 Locks
Ballinamore	1 hour	3 Locks
Leitrim	8 hours	11 Locks
Lough Key Forest Park	3 hours	1 Lock
Boyle	1 hour	
Carrick-on-Shannon	3 hours	1 Lock

# Discover Lough Derg Lake from Banagher - Southern tour



This beautiful cruise around Lough Derg Lake is mostly a round trip. This cruise is best suited when the weather is not too stormy, as you are almost exclusively on the lake. There is a beautiful seascape with small villages and historical sites to see. The region is one of the most beautiful in the entire Midlands. In addition to exploring the inland lake, numerous activities are available which offer something interesting for every crew member. Lough Derg Lake is a special paradise for anglers. Full tour description can be found from page 27.

Town	Navigation Time	Locks/Bridges
Lough Derg Lake - Southern tour		
Banagher		
Portumna	3 hours	1 Lock, 1 Bridge
Garrykennedy	4 hours 30 minutes	
Killaloe	2 hours 30 minutes	
Mountshannon	4 hours	
Portumna	5 hours 30 minutes	
Banagher	3 hours	1 Lock, 1 Bridge

# From Banagher on a slower pace - northern tour

If you prefer to cruise comfortably and want to see a lot on land along the way, then this tour is right for you. In addition to the famous ruins of the Clonmacnoise monastery, you can visit the beautiful town of Athlone, eat well and visit the famous golf club on Hodson Bay for a game of golf. The tour description can be found from page 33.



Town	Navigation Time	Locks/Bridges
Banagher - Nothern Tour		
Banagher		
Shannonbridge	3 hours	
Clonmacnoise	1 hour	
Athlone	1 hour	1 Lock
Hudson Bay	1 hour	
Killinure	1 hour 30 minutes	
Shannon bridge	3 hours	1 Lock
Banagher	3 hours	

# Quick Interesting Facts

## A little history about Ireland:

Ireland has a rich, long and sometimes dark history. Nevertheless, the history of this island state is exceptionally interesting and diverse. From the Celts to the great famine and economic boom, history is evidenced everywhere through many preserved monuments and sites.



## The Shannon and the Midlands

The majestic Shannon is Ireland's historic lifeline. A waterway that leads through the millennia, on the banks of which countless myths and legends await perked ears. Embedded in the Midlands, it is a lush green, rugged river landscape, in largely untouched nature. Here you can explore a large network of rivers and lakes without ever getting bored.



# Quick Interesting Facts

## Irish pub culture and its music

There is hardly a spot in Ireland that does not have an Irish pub. This is where the locals and tourists meet in the evening to exchange ideas, drink a Guinness or other brews and listen to the cheerful live music played with typical Irish instruments. Do not miss an evening in a cozy Irish pub during your boat trip, to partake in an atmosphere which will be memorable for a lifetime!



## Famous Writers and their works

Everyone knows at least one Irish writer and their corresponding work. For the Irish, this cultural asset is very important in addition to their deep love for music. Whether James Joyce or Oscar Wilde, take the opportunity to read one of the exciting and interesting masterpieces during your cruise.



# Quick Interesting Facts

## Gaelic and English as the National Language

Gaelic and English as the national language

Once in Ireland you'll find every sign in two languages - Gaelic and English. Although there are only very few regions that only speak the original language of Ireland in everyday life, every Irish person learns the language at school. It is not a simple language. But where do its roots come from?



## Ireland's Raised Bogs - Peat extraction

Anyone who has already been to Ireland in autumn, winter or spring will have noticed the strange smell in the air. The Irish still use peat to heat their stoves and fireplaces today, largely by tradition. This can be found in the raised bogs and is for the most part traditionally removed by digging. Find out more about the special heating material here.



# Lock Operating Times



## Lock operating times on the Shannon River



The locks on the Shannon are operated by a lock keeper. He will also be happy to take the boat rope from you after entering the lock with a boat hook and put it around the bollard for you. All the telephone numbers of the lock keepers are on your waterway map.

Shannon		
Period	Weekdays	Sundays
14 march - 3 april	9h-18h30	13h30-16h
4 april - 25 september	9h-20h30	9h-18h
26 september - november	9h-19h30	10h-16h
Lunch breaks are usually between 1pm and 2pm		

## Shannon-Erne-Waterway

The 16 locks on the Shannon-Erne-Waterway are automatic and are manually operated by using a smart card. There is no lock keeper on site.

However, you will find telephone numbers on your waterway map in case there is a problem. The locks can usually be operated from 9 a.m. to 8 p.m. In the months when it gets dark more quickly, the times may differ, as you are only permitted to cruise until dusk.

Please also note that you are only allowed to cruise a maximum of 5 km / h on the Shannon-Erne-Waterway!



# Discovering the Shannon and Lough Ree rivers from Carrick-on-Shannon



## Carrick-on-Shannon

From here you start your boating adventure towards Athlone. Before you leave, you can replenish your food supplies on board. There are many shops, bars, restaurants and pubs in this city. The small town still boasts some buildings from the 15th century.

The smallest church in Ireland, the Costello Church and the historic bell tower are particularly worth seeing. Art lovers will find "The Dock" just behind the public harbor, an old courthouse from the 19th century which houses an art center today. The remains of a castle can still be found on the outskirts. The castle was built in 1611 and was intended for English settlers.

## Cruise to Dromod

After leaving the harbor to the south, the first lock (Albert Lock) awaits you at Jamestown after a short section of the canal. Then you will cross two lakes, Lough Bofin and Lough Bodergh. The two lakes are translated as "the lake of the white cow" and "the lake of the brown cow". Both lakes got their unusual name from a legend about a mermaid. You can also go fishing here!



## Dromod

After about 3 hours you will reach the port in Dromod. The port offers sanitary facilities and restaurants. From here it is only a short walk to the center of the village. Pretty houses and a beautiful fountain await visitors. For railway enthusiasts there is the Cavan and Leitrim Railway, a steam model train. In addition to a ride, there are also exciting guided tours on the premises.

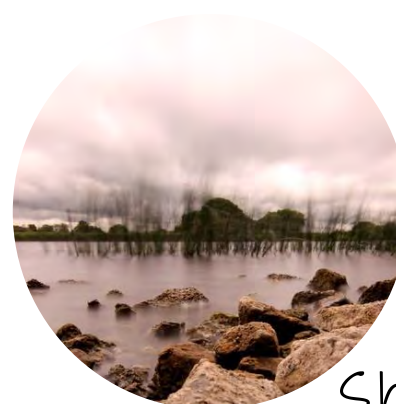
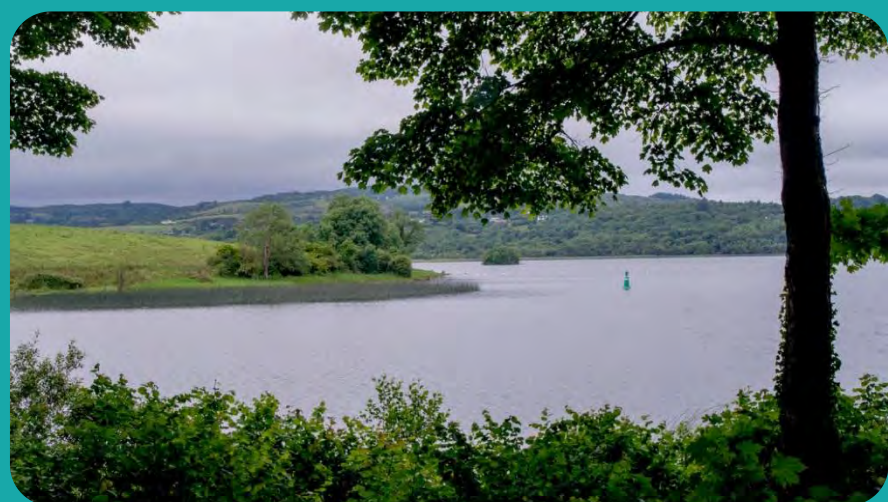




# Discovering the Shannon and Lough Ree rivers from Carrick-on-Shannon

## Detour to Kilglass

If you want to leave the Shannon briefly for a quiet detour, the entrance via the branch to Kilglass and Grange is worthwhile. In these calm waters of the Shannon river, you cruise through beautiful reed beds with wonderful views. The landing is at the very end of the respective inlet. From here you can enjoy the sight of typical Irish landscapes. Pay attention to the information on the waterway map!



## Roosky

After the detour, we head back to the Shannon and towards Roosky. The second lock is located shortly thereafter. If you can no longer pass the lock, there are several moorings in the village next to the bridge.

The place itself offers a few shops, restaurants and pubs. Most pubs often have live music in the evenings. If you skipped Kilglass or want to continue, you can drive to Tarmonbarry and dock there. The drive from Dromod via Kilglass to Roosky takes a total of 5 hours.

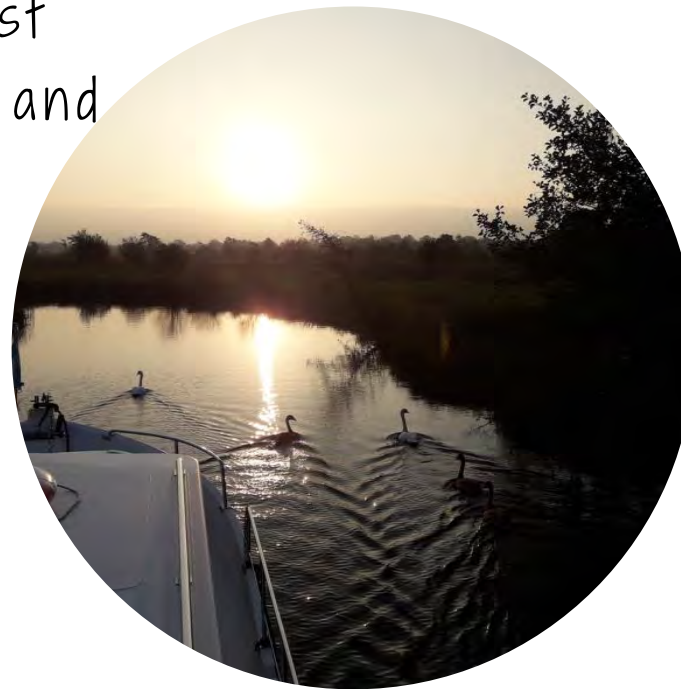


# Discovering the Shannon and Lough Ree rivers from Carrick-on-Shannon



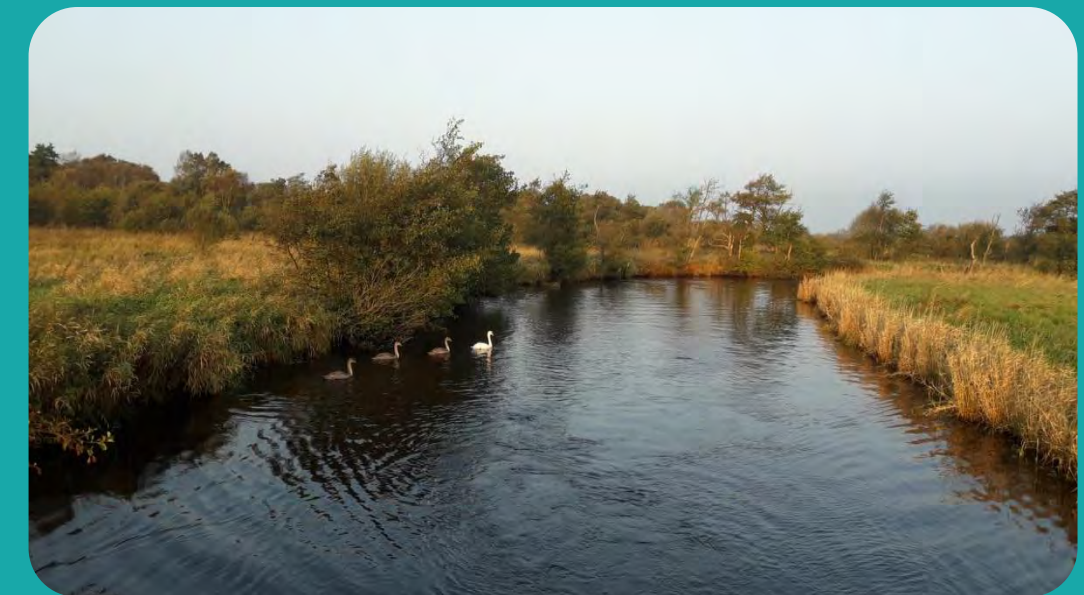
## From Roosky to Lanesborough

From Roosky cruise on through the wide river and over the typical lakes towards Tarmonbarry. Boats that are taller also must pass a lifting bridge (drawbridge). Both are operated by a lock keeper and cost € 1.50 each. After 4 hours you will arrive in Lanesborough. You can moor here either by the bridge or at the mooring landings just before Lough Ree. There are restaurants and shops in the small community.



## Detour to Camlin River

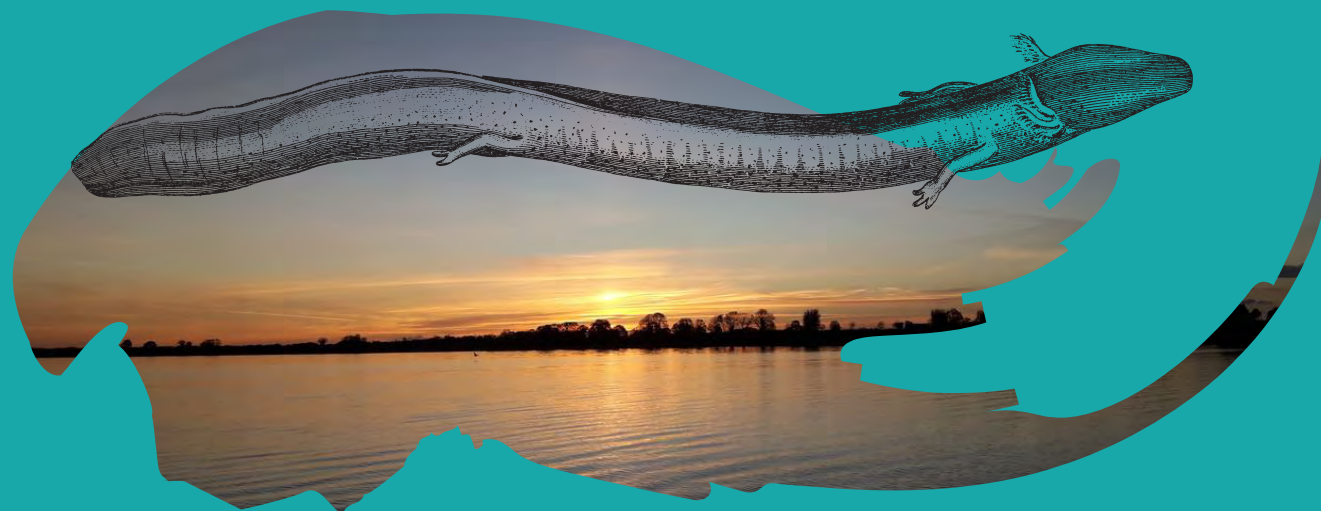
If you are traveling by small boat, a detour through the Camlin River is worthwhile. This is a small tributary/stream that can be navigated in a loop. The river is not very wide, so no larger boats can use the waterway. A romantically beautiful landscape awaits you in complete tranquility. The drive is particularly worthwhile in the early mornings, when mist often hovers over the fields alongside the first rays of sunshine.



# Discovering the Shannon and Lough Ree rivers from Carrick-on-Shannon

## Lough Ree

After Lough Derg, Lough Ree is the second largest lake in the Shannon area. When there is wind it can get quite rough on the lake, which requires special care when navigating. You may want to wait to cross in strong winds or bad weather. The crossing takes at least 2 hours. Inside the lake there are a few small islands that can only be reached with a dinghy. In the northern part is the island of Inchcleraun, on which the remains of an early Christian monastery and church lie. In the west at medium altitude is Rindoon, a peninsula steeped in history. According to legend, it is said to be home to a giant sea snake here, not unlike the Loch Ness in Scotland. It was first spotted by three priests while fishing, and anglers and locals have been reporting sightings since the 1960s. So watch out!



## Glasson or Hodson Bay

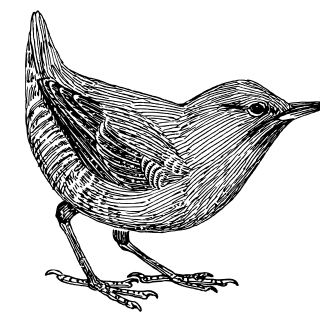
After a good two hours on Lough Ree, you will arrive at Hodson Bay. The Athlone Golf Club is located next to the pier. Alternatively, you can moor in Glasson. There is also a golf club and very good restaurants in Glasson. Many rare plants and orchids can be discovered around the lake. The corner is also considered a paradise for fishing enthusiasts.



# Discovering the Shannon and Lough Ree rivers from Carrick-on-Shannon

## Athlone

From Hodson Bay, it is worth making a detour to Athlone before returning to Carrick-on-Shannon. In addition to the historic old town with pubs and restaurants, the town also boasts a historical backdrop. The local museum or the famous King John's Castle from the 13th century are well worth seeing. The port in Athlone is guarded until midnight and costs € 12 per night. After this detour, it's back over Lough Ree lake to Lanesborough.



## Returning to Carrick-on-Shannon

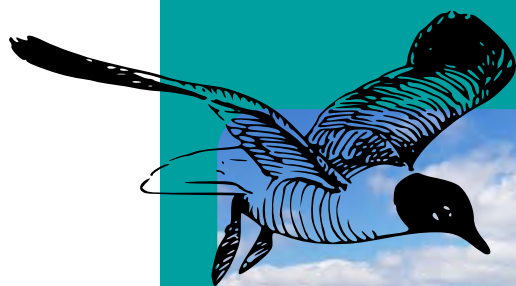
After an exciting exploration tour in Athlone, cruise back over to Lough Ree lake and on to Carrick-on-Shannon. From Lanesborough it's about an 8-hour drive back to home port in Carrick-on-Shannon. If you still have a day left and would like to make a detour, you should go to Lough Key Forest Park. The drive from Carrick-on-Shannon takes approximately 2 hours. Shortly before Lough Key there is another lock to go through.



# Discovering the Shannon and Lough Ree rivers from Carrick-on-Shannon

## Lough Key Forest Park

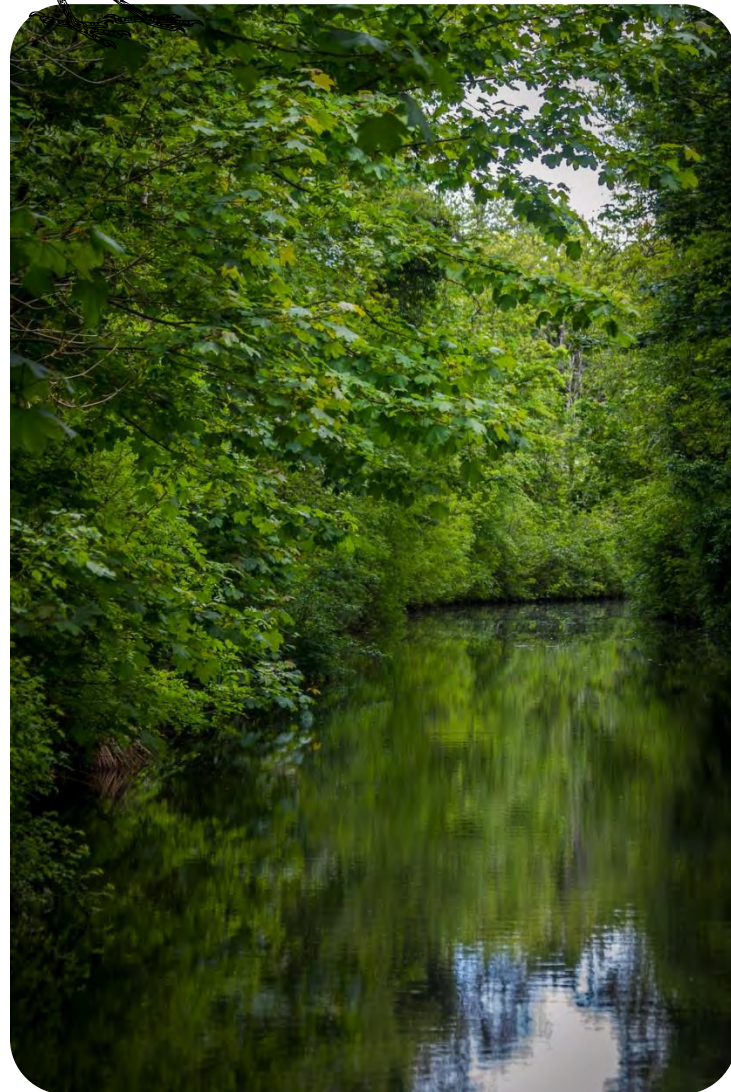
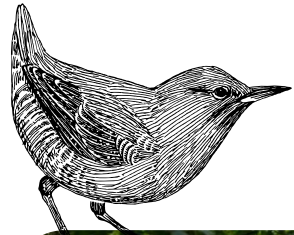
Not only is the lake breathtakingly beautiful, but there is also a beautiful park, quite interesting and not just for families with children. Explore the beautiful, wild-growing areas with many types of trees and plant species. Among other things, you can enjoy long walks through wild rhododendrons. Especially in late spring, the forest looks magical due to the many blooming pink and violet flowers. In addition to the beautiful park, there is a large children's playground and a treetop path (tree canopy). The jetties at the park have sanitary facilities and some sockets for shore power. Walks in the forest and along the boat dock are free, but there is an entrance fee for the rest of the activities. In the middle of the lake there is a small island with well-preserved remains of an imposing castle.



## Carrick-on-Shannon

You can return your boat to the base around 9am

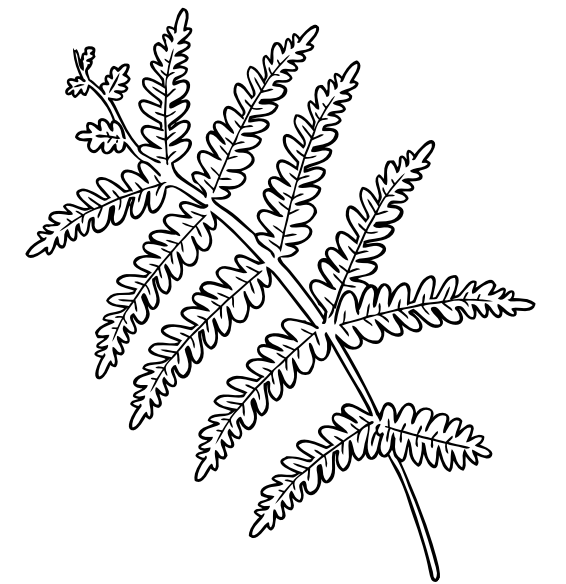
# Experiencing authentic Ireland from Carrick-on-Shannon – Northern Tour



## Shannon-Erne-Waterway

The Shannon-Erne Waterway is a real gem among the Irish waterways. On this waterway, experience a unique and beautiful nature which partly consists of canals, lakes and rivers. The edge of the bank is partly covered with lush green fields, sometimes glistening towards you. There are fewer boats on the Shannon-Erne-Waterway than on the Shannon heading South. This waterway is ideal for anglers and bird watchers.

After extensive renovations, the Waterway was reopened in 1994. On the way you will always find remnants of times long gone. Among other things, the remains of the destroyed bridge between the Republic of Ireland and Northern Ireland can be seen. Shortly afterwards, a modern bridge spans the canal again. However, you will not cruise by completely without civilization, because on the way there is the opportunity to visit a picturesque village and stop in one of the typical Irish gastro-pubs. In total, the Shannon-Erne-Waterway is 63km long and has 16 locks between Leitrim and Upper Lough Erne. Along the way, you can stop at one of the 7 public piers.



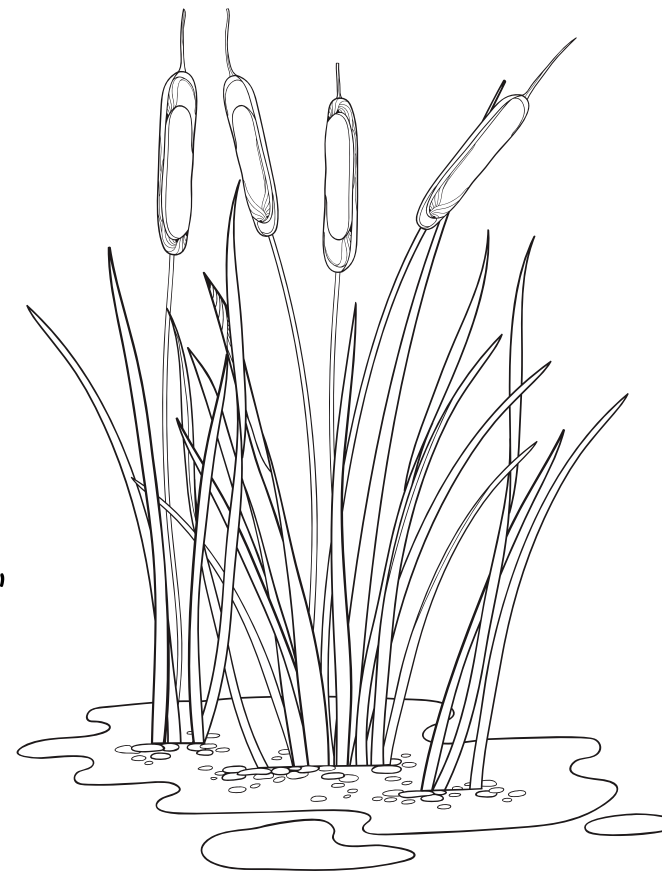
# Experiencing authentic Ireland from Carrick-on-Shannon – Northern Tour



## Carrick-on-Shannon

From here you start your boating adventure towards Ballinamore.

Before you leave, you have the opportunity to replenish your food supplies on board. There are many shops, bars, restaurants and pubs in this city. The small town still boasts some buildings from the 15th century. The smallest church in Ireland, the Costello Church and the historic bell tower are particularly worth seeing. Art lovers will find "The Dock" just behind the public harbor, an old courthouse from the 19th century which houses an art center today. The remains of a castle can still be found on the outskirts. The castle was built in 1611 and was intended for English settlers.



## Leitrim

Leitrim lies at the gateway to the Shannon-Erne Canal. There are many beautiful walking trails around the place through forests and along the lake shore. The remains of an old castle that belonged to the famous O'Rourke family in 1540 are still standing at the harbor. There are restaurants and an ATM in the village. The public mooring has toilets, showers, washing facilities and a pumping station for dirty water.





# Experiencing authentic Ireland from Carrick-on-Shannon - Northern Tour



## Keshcarrigan



Along the way to Keshcarrigan  
Immediately after Leitrim you will pass the first lock on the Shannon-Erne Canal. If you have not received a briefing for the locks on site or you are unsure, there are instructions here, directly at the lock. You can find a description of how to operate the automatic locks on your waterway map. After 7 locks there is the next mooring in Keshcarrigan. If you have a dinghy with you and want to go fishing, the nearby Lough Scur offers the perfect opportunity.



The first mooring option is after passing through the 8th lock. The place is very small, but the port has very good facilities. In addition to the sanitary facilities including showers, there is a washing facility, a pumping station for wastewater and some columns for shore power. The center of the village is only 5 minutes away. There are two hills surrounding the place, Sheebeg and Sheemore Hill. Kelleher's shop is located at lock 12. Here you can choose from a large selection of organically produced foods, but also real exotic fare, such as interesting jams and goose eggs. To round off the evening in style, you can visit one of the two local pubs. Historically, the village also has something special to offer. From the lough you can already see an old, pagan grave from the Bronze Age. This is where the Keshcarrigan Bowl, an ancient metal bowl, was found. You can marvel at these today in the National Museum in Dublin. Our tips for your stay in Keshcarrigan is to Hike up Sheebeg Hill for breathtaking views and visit Gertie's bar and restaurant for true Irish hospitality.

# Experiencing authentic Ireland from Carrick-on-Shannon - Northern Tour

Ballinamore

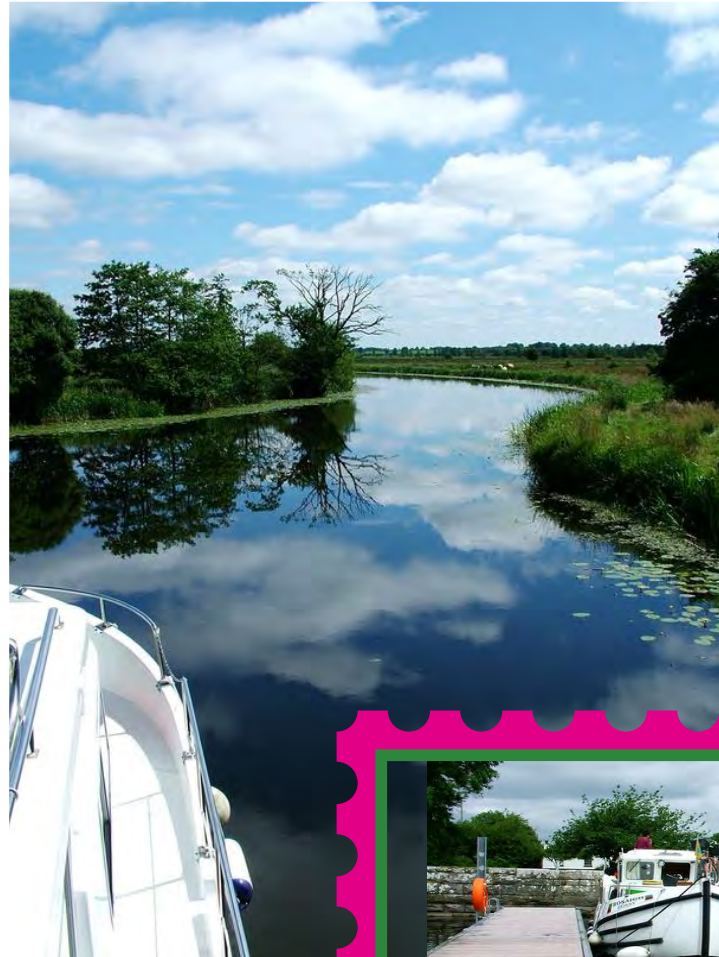


## Heading to Ballinamore

After lock number 8 and a short stretch of canal, you will cross three small lakes. On the Kiltybardan Lough you can also moor on a free jetty. If you have a dinghy, you are free to explore the lake by boat. There are two more locks to Ballinamore, the last stop on the Shannon-Erne Canal for the week.



Ballinamore is an angler's paradise. There are a total of 40 lakes within a radius of 10km. The port is very well equipped and has sanitary facilities, washing facilities, pumping station and shore power connection. There are several historical buildings in town. These include the Old Court House from 1830, the Church of Ireland building from 1780 and the city bridge with typical arches from the 19th century. The Glenview Folk Museum is also located here. Immerse yourself in Ireland from the early 20th century and marvel at typical Irish collectibles. In addition to fishing, there are also beautiful walking trails, horseback riding and golf, and you'll be spoiled with culinary delights in the several pubs and restaurants in town.

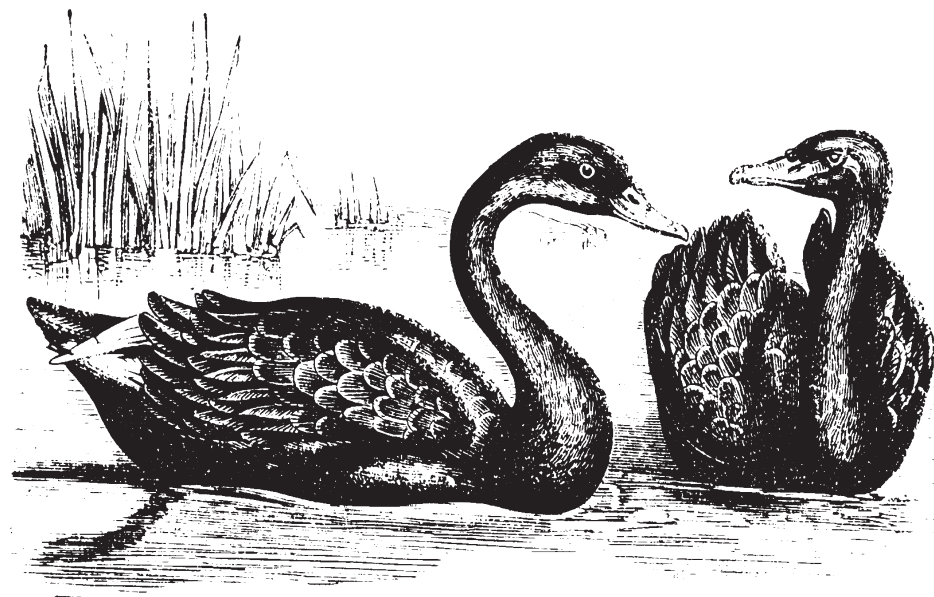


# Experiencing authentic Ireland from Carrick-on-Shannon - Northern Tour



## Heading back to Leitrim

The drive back to Leitrim is long with many locks, but it can be done in one day. It is best to start in the morning and arrive back in Leitrim in the afternoon. The next day it's 3 hours to Lough Key and Boyle before heading back to Carrick-on-Shannon.



## Lough Key Forest Park

Not only is the lake breathtakingly beautiful, but there is also a beautiful park, quite interesting and not just for families with children. Explore the beautiful, wild-growing areas with many types of trees and plant species. Among other things, you can enjoy long walks through wild rhododendrons. Especially in late spring, the forest looks magical due to the many blooming pink and violet flowers. In addition to the beautiful park, there is a large children's playground and a treetop path (tree canopy). The jetties at the park have sanitary facilities and some sockets for shore power. Walks in the forest and along the boat dock are free, but there is an entrance fee for the rest of the activities. In the middle of the lake there is a small island with well-preserved remains of an imposing castle

# Experiencing authentic Ireland from Carrick-on-Shannon - Northern Tour

## Boyle

Boyle is a small and charming town where time seems to have stood still, something you can clearly witness in the quaint shops that exist here. The roots go back to the foundation of the Cistercian abbey in 1161. There are still very well-preserved walls and some parts of the monastery that can be visited. In the village, there is the King House, an old manor house that was formerly inhabited by nobles. Today the house hosts an interactive museum for the whole family. There is a lovely little garden near the King House. In addition to a playground and tennis court, there is also exercise equipment and a beautiful green riverbank. There is a small market every Saturday. Here you can get homemade, regional products. Carrick-on-Shannon is around 3 hours' drive from here.



## Carrick-on-Shannon

You can return your boat to the base around 9 a.m.

# Discovering Lough Derg Lake from Banagher - Southern Tour

## Lough Derg Lake

The region is one of the most beautiful in the entire Midlands. The entire Lough Derg Lake can be crossed comfortably and stress-free within a week. The tour is particularly worthwhile for boat lovers as well as for newbies, because the lake landscape in combination with the lush green hills radiates a unique flair. Thanks to the myriad of activities, no crew member will be bored. No other region has so much History, landscapes, wonderful atmosphere and varied activities. Hobby anglers will find true paradise here on Lough Derg Lake! No lake along the Shannon is better for catching roach, pike and bream. Trout can also be caught in certain places on the bank. A dinghy is also very useful when exploring the Shannon in Ireland, as it is great for visiting one of several uninhabited islands in the lake.



## Lough Derg Lake Attractions

Holy Island - one of the most important monastery ruins in Ireland

Tountinna - highest point of the nearby Arra Mountains, wonderful panoramic view of the lake

Portumna Forest Park - lots of hiking and biking trails

Two-Mile-Gate Lakeside Park + Ballycuggeran Woods - a few minutes from Killaloe, perfect for a nature break

Killaloe and Ballina - old town and dreamy alleyways, old shops, rich history

Portumna Castle and Gardens



Castletlough - picnic, water skiing, fishing, waterfront walks

# Discovering Lough Derg Lake from Banagher - Southern Tour



Banagher

The trip starts at our port in Banagher, a place rich in history. Castle Clonony, which was built in 1490, is worth a visit. Now a museum, the castle shows the life of the residents in the 16th century. It is essential to note the visiting times here. Visit St. Paul's Church is at the south end of Main Street and its particularly noteworthy stained-glass windows which were originally intended for the famous Westminster Abbey. As everywhere in Ireland, there are also some pubs here that invite you to a cozy get-together with live music.

There is also a supermarket near the port.

## Heading to Portumna

After your departure from Banagher, cruise along on the Shannon in the first section and pass the Meelick Lock. The fee for the lock and the subsequent bridge is € 1.50 each. After about 3 hours you will reach Portumna, one of the most beautiful cities in County Galway.



# Discovering Lough Derg Lake from Banagher - Southern Tour

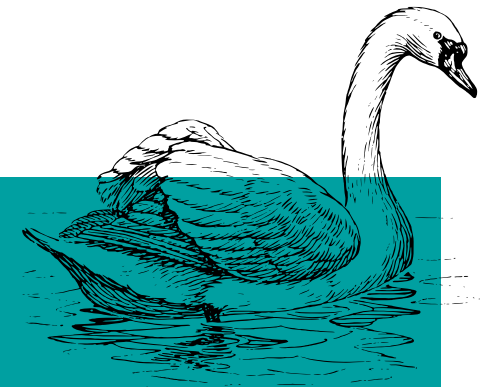


Portumna



It's worth a longer stay here to get to know all the sights. Portumna Castle leaves an amazing impression. The semi-fortified castle was built in the early 17th century. Next to the castle there is an interesting kitchen garden and a tea house. The Forest Park on the banks of Lough Derg is ideal for a long walk. Anyone interested in Irish history should visit the Irish Workhouse Center - an impressive museum about families who used to be unable to take care of themselves. There are also some restaurants in Portumna

## On the way to Garrykennedy



A large part of the lake will be crossed on this day. Since there are few stopovers, half the day is spent in wondrous nature, so to speak. The region is the most beautiful part of the entire Shannon region. Another stopover can be made in Terryglass. There is good food, entertainment and an overall great atmosphere. The town center is only 5 minutes from the port. The village's history dates to the 6th century. The famous Book of Leinster (currently at Trinity College Dublin) was written here by 12th century monks. There is a playground for children right next to the harbor, and there are two restaurants in the village itself. The path continues towards Garrykennedy past many wooded peninsulas. At Cooldoney you can switch to a different type of water sport at the Lough Derg Watersports Center. Make sure to plan a visit to Illaunmore Island on the way. The island is the largest on Lough Derg Lake. The trip takes about 4 hours 15 minutes via Terryglass.



# Discovering Lough Derg Lake from Banagher - Southern Tour

## Garrykennedy

After a nice drive on the lake, you will arrive at Garrykennedy. This village was once a fortress of the O'Kennedy clan - a family from the 15th century. The harbor used to be an important trading port. Slate was brought from the nearby mines and shipped on to Limerick. The harbor is well situated and is therefore very popular with leisure captains today. It is particularly nice to visit the two nearby pubs to enjoy a cold beer while listening to live Irish music. Larkin's also offers good Irish cuisine.



## From Garrykennedy to Killaloe



The route leads to the lower end of the lake to Killaloe. On the way, the stunning, natural landscape speaks for itself- perfect for experiencing tranquility. There are hardly any towns on the way, which is why it is advisable to drive through the entire day at this step. At the end you reach the two villages of Killaloe and Ballina. The navigation time is approx. 2 hours 30 minutes.

# Discovering Lough Derg Lake from Banagher - Southern Tour

## Killaloe and Ballina

The two villages are separated by a river, however, due to the short travel time, there is enough time to explore both places and, above all, to replenish supplies on board or to indulge in culinary delights. One of the most famous sights is the stone bridge that connects the two villages. Fans of local history can learn all about the city's most important person at the Brian Boru Heritage Center. A music festival is held in Killaloe in July. Nature lovers can hike extensively around the two villages and admire the Celtic landscape. There are easy hikes such as the signposted Killaloe Heritage Trail, or more challenging mountain tours.



## On the way to Mountshannon



Shortly after Killaloe on the way towards Scarriff it is worth stopping to hike the Ballycuggaran Loop Walk (red arrows) on the shore. From here, there are fantastic views of Lough Derg Lake, the Annacarriga Valley and the nearby mountains. The somewhat sporty ascent is rewarding.

After the beautiful excursion, the trip continues to Scarriff. The town is particularly known for its port- a perfect stop for a little refreshment. On the way to Mountshannon you will pass a few small islands, including Rabbit Island, Red Island and Holy Island. The ruins of the monastery are especially worth seeing on Holy Island. The island is also called "Church Island". Settlement began in the 6th century and the ruins are from the late 10th century. In addition to visiting the well-preserved ruins and the round tower, a stay on the island is worthwhile to simply enjoy the beautiful surroundings and the view of the lake. Shortly after Holy Island, after a total of 4 hours, the destination port appears.

# Discovering Lough Derg Lake from Banagher - Southern Tour

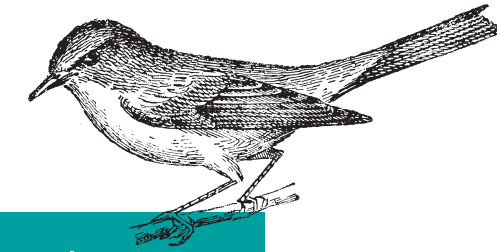
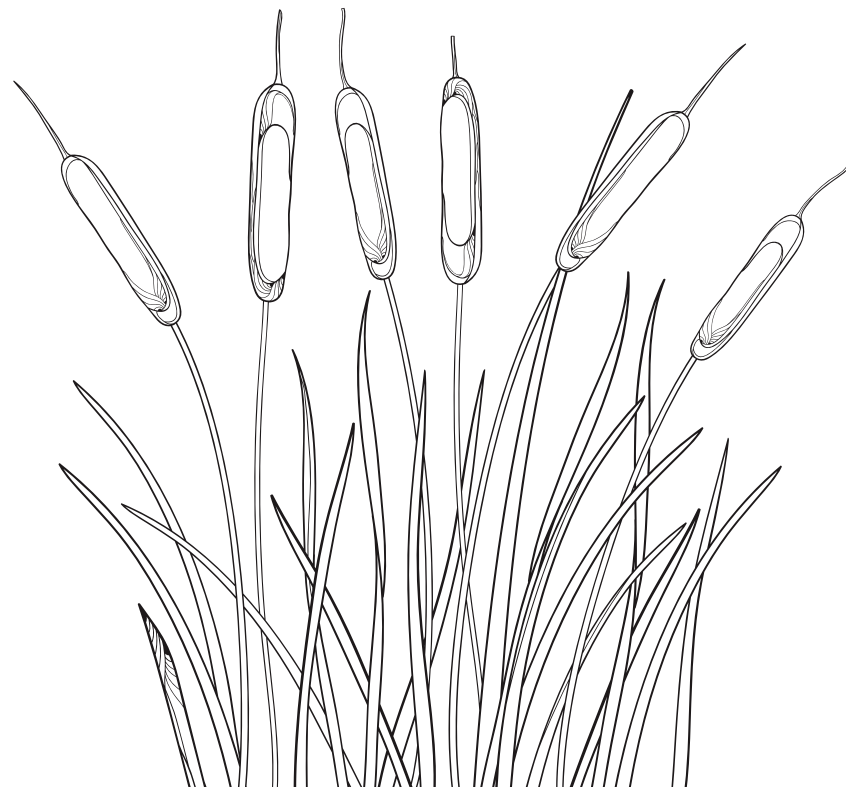


## Mountshannon

A large harbor awaits you here, a picturesque village with a playground and a labyrinth, a forest, a mini golf course and a semi-enclosed swimming area in the harbor.

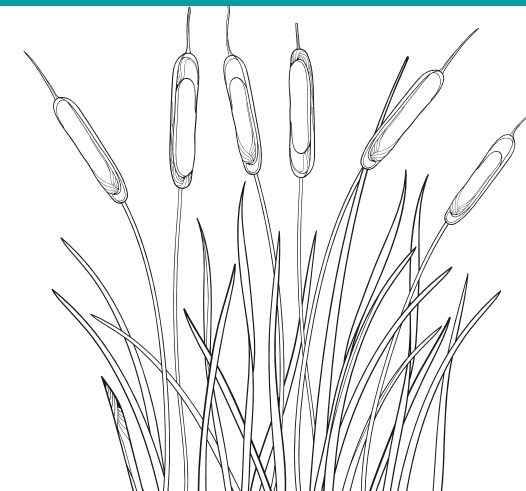
## From Mountshannon to Portumna

This day is spent exclusively on the lake. It is worth enjoying the evening in Portumna again. The navigation time is approx. 5 hours 30 minutes.



## Portumna to Banagher

The last section of the trip leads back to the River Shannon and back to Banagher. Navigation takes about 3 hours. On the way there, one lock and one bridge must be passed.



## Banagher

You can return your boat to the base around 9 a.m..

# From Banagher on a slower pace - Northern Tour



Banagher

The trip starts at our port in Banagher, a place rich in history. Castle Clonony, which was built in 1490, is worth a visit. Now a museum, the castle shows the life of the residents in the 16th century. It is essential to note the visiting times here. Visit St. Paul's Church is at the south end of Main Street and its particularly noteworthy stained-glass windows which were originally intended for the famous Westminster Abbey. As everywhere in Ireland, there are also some pubs here that invite you to a cozy get-together with live music. There is also a supermarket near the port.



Shannonbridge

From Banagher to Shannonbridge you cruise at a leisurely pace on the broad Shannon River. Lush grasslands await feasting eyes from left to right, and the bank is mostly overgrown with reeds. After 15 km and about 3 hours you can already see the old and striking bridge bearing the same name as the town. The bridge was built in 1757, making it one of the oldest bridges in Ireland which is still in use today. At the time of Napoleon, the place was fortified by the British. Remains of the fortification can still be found in the village today and former fort has become a restaurant today.

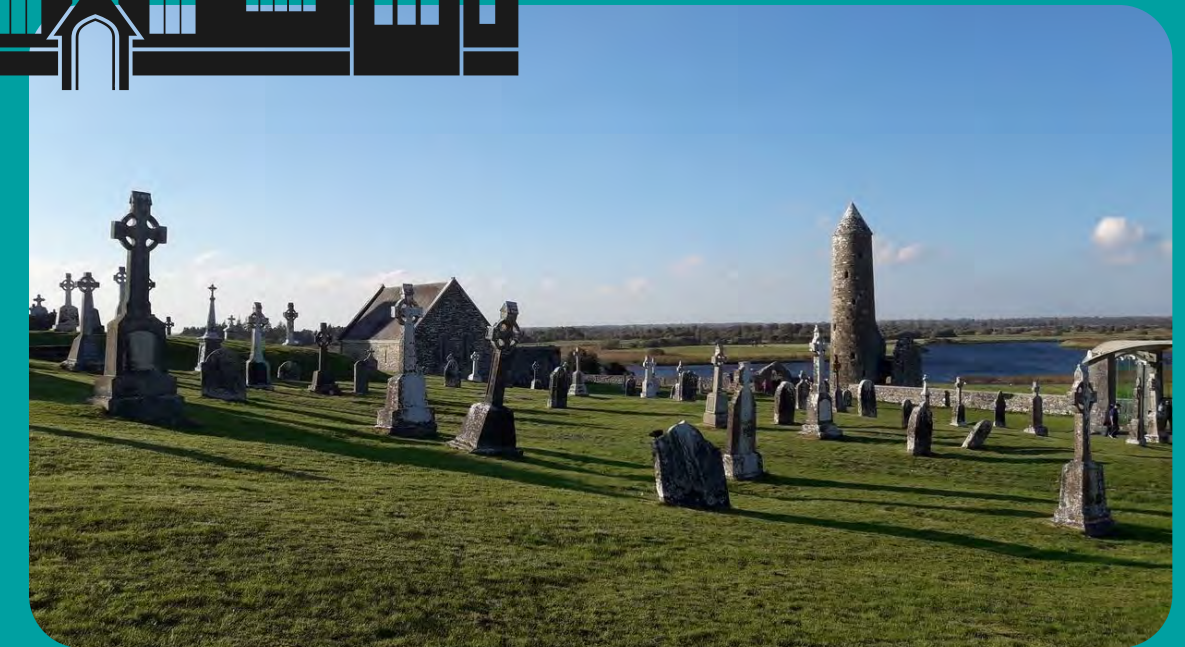


# From Banagher on a slower pace - Northern Tour



## Clonmacnoise

It takes 1 hour from Shannonbridge to the famous, ancient Clonmacnoise Monastery. It is recommended to get there early in the high season in order to get a spot at the jetty, which is right next to the facility. Clonmacnoise is one of Ireland's most impressive historical sites. The mystical location on the Shannon alone is enchanting in good weather. The monastery dates to the 6th century and is mostly well preserved for its age. The ruins of a cathedral, 7 churches, 2 round towers, 3 high crosses and many old tombstones can be discovered on site. There's an admission fee to tour of the facility and there is also a very exciting visitor center and an informative film at the beginning of the tour. Another ruin is located directly at the pier, this time a former Anglo-Norman castle. The jetty has no shore power option, and you shouldn't stay here in windy weather because it is not very well protected.



# From Banagher on a slower pace - Northern Tour



Athlone

After visiting the impressive Clonmacnoise site, you can get to Athlone in an hour by passing one lock. In addition to a historic old town with great pubs and restaurants, the city also offers a historical backdrop. The local museum or the famous King John's Castle from the 13th century are well worth seeing. The port in Athlone is guarded until midnight and costs € 12 per night.

## Hodson Bay

From Athlone, it's an hour to Hodson Bay. The Athlone Golf Club is located next to the pier. Golfers are welcome to play a game and enjoy the nice surroundings.



## Killinure and Glasson

From Hodson Bay, directly across the Lough Ree river, lies Killinure or Glasson. Glasson is known as the Village of Roses, making it one of the Midlands' gems. There are several berths. Golfers also can play a game at Glasson Country House & Golf Club. A beautiful promenade leads to the village of Glasson in 2km. Here you will find everything your heart desires.

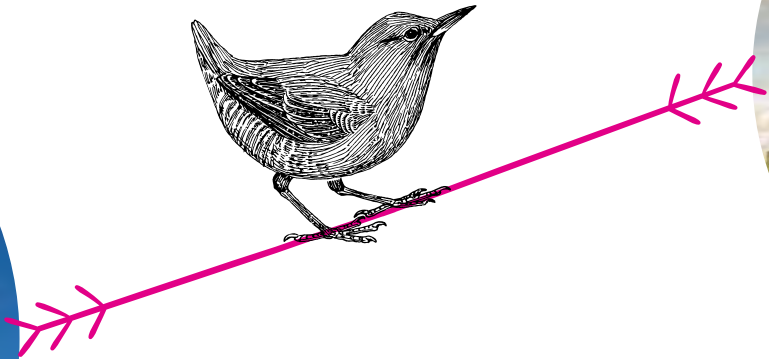


# From Banagher on a slower pace - Northern Tour



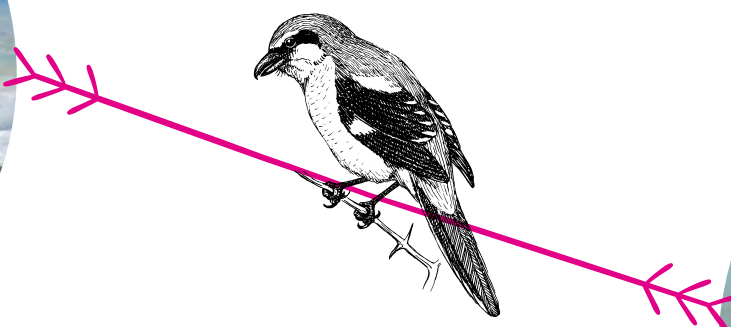
Athlone

Travel time from Glasson or Killinure to Athlone is 1 hour.



Shannonbridge

Travel time from Athlone to Shannonbridge is 3 hours. One lock must be passed.  
After Banagher it's another 3 hours



Banagher

Returning the boats is done at about 9:00am

# Short weeks and Longer trips



## Short stays from Carrick-on-Shannon

### Weekend

On a weekend, a tour to Lough Key Forest Park and / or Boyle and back is recommended. Alternatively, you can cruise the Shannon River to Kilglass.



## Short stays from Banagher

### Weekend

On a weekend you can either cruise from Banagher to Portumna or reach the famous Clonmacnoise, well worth seeing.

### Short week / Midweek

Those who delight in cruising many hours in a day can make it to Athlone and back in a short week, or alternatively to Killinure / Glasson. If you want to take your time for sightseeing and longer stopovers, then Lanesborough is a good round trip destination.



### Short week/ Midweek

There are several options from Banagher for a midweek/short week cruise. For example, a trip to Athlone via Clonmacnoise and back, or a trip on Lough Derg to Killaloe and back the same way. If you would like to go in both directions, you can go to Portumna and then in the other direction to Clonmacnoise and back.

# Short weeks and Longer trips



## The whole Shannon River in 2 Weeks

Whether you are sailing from Carrick-on-Shannon or Banagher, you can take this unique tour from both ports. From Carrick-on-Shannon there is a short detour to Lough Key Forest Park before heading towards Athlone. You can navigate Lough Derg Lake through our second port in Banagher. After the round trip on Lough Derg, the largest lake on the Shannon, cruise via Portumna back over the Lough Ree Lake and on to Carrick-on-Shannon. From Banagher, for example, you can first cruise on Lough Derg Lake and then on to Lough Ree Lake to Lough Key Forest Park, and then make your way back to Banagher.

## Carrick-on-Shannon to Northern Ireland

In 2 weeks, you can sail the enchanted and delightful Shannon-Erne-Waterway and explore beautiful Northern Ireland with its breathtaking seascape. There are 16 locks on the Shannon-Erne-Waterway, but the effort is more than rewarded! The journey takes you via Leitrim and Ballinamore to Enniskillen. From there you cruise on Lough Lower Erne where you can explore some of the many islands on the lake. Devenish Island is particularly recommended. If you would like to go further, you can cruise to Kesh and then make your way to your home port again.





## Our Base in Ireland



## Carrick-on-Shannon

### **CARRICKCRAFT**

The Marina St George's Terrace, Carrick-on-Shannon,  
Co. Leitrim,  
N41 XA00, Ireland

Tel: +353 (0)719620236

carrick@carrickcraft.com

GPS: N 53°56'38.085" - W 8°5'55.726"

### Directions to the base:



Carrick-on-Shannon Regional Rail (1,6km)



Dublin Airport (144 km)



From Carrick-on-Shannon (1,5km)



## Our Base in Ireland



## Banagher

### **CARRICKCRAFT**

The Marina, Curraghavarna, Banagher,  
Co. Offaly, R42 DH51 Ireland

Tel: +353 579151187

E-mail: [banagher@carrickcraft.com](mailto:banagher@carrickcraft.com)

GPS: N 53°11'39.369" - W 7°59'24.429"

### Directions to the base:



Dublin Airport (144 km),  
Knock Airport (128 km),  
Shannon Airport (96km)



From Banagher (650 m).