

Follow LocaboatHolidays on:



Alsace



Navigation Guide

LOCABOAT
holidays

Helpful tip: download a QRCodeApp

Ahoy, captains!
Create your own route..



Week-ends and Mini-weeks

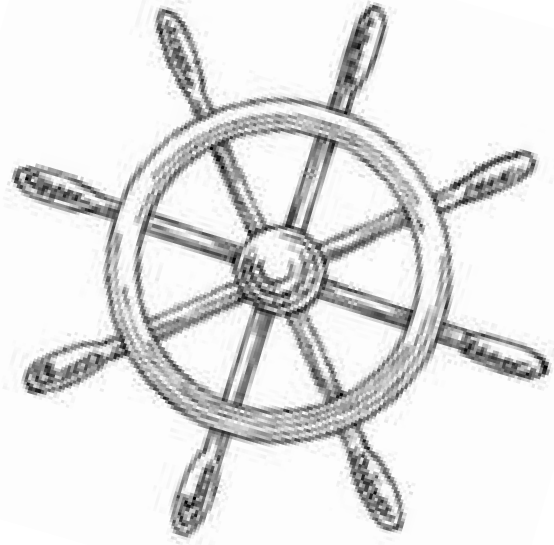
Week-ends

Town	Navigation Time	Number of locks
Saverne	3h15	10
Lutzelbourg		
Arzviller	1h15	boat lift
Niderviller	1h15	/
Gondrexange	2h	/

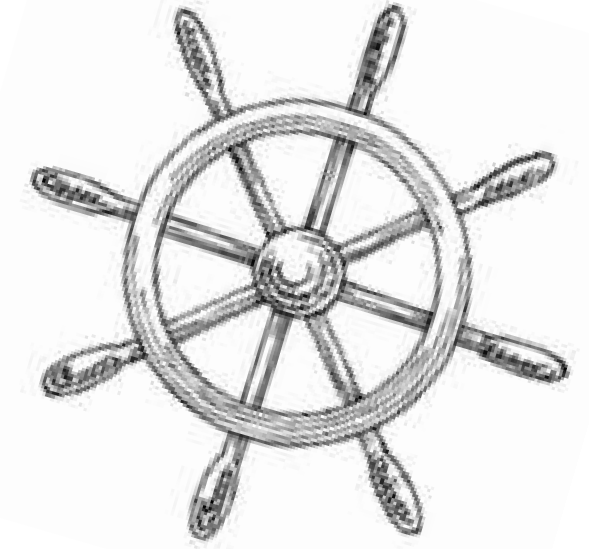


Mini-Weeks

Town	Navigation time	Number of locks
Hochfelden	4h15	10
Saverne	3h15	10
Lutzelbourg		
Arzviller	1h15	boat lift
Niderviller	1h15	/
Gondrexange	2h	/
Lagarde	4h	7



Suggested day-by-day routes from Lutzelbourg

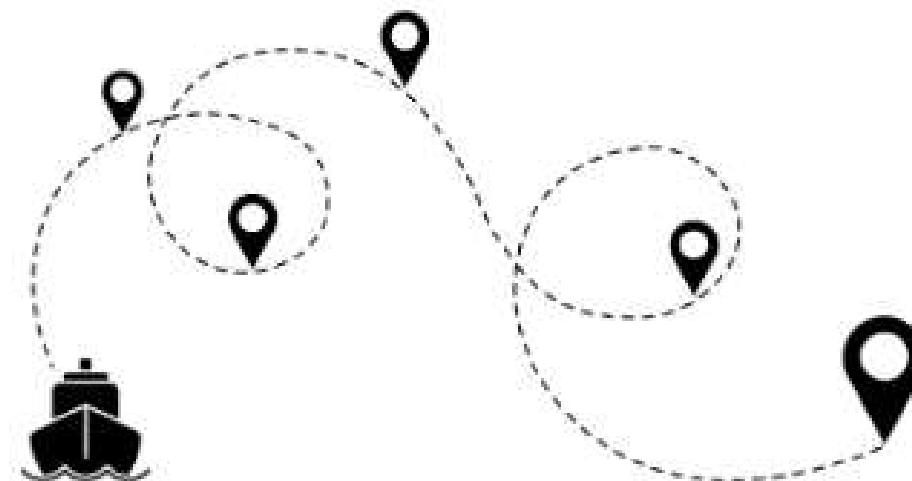


Week-end

Mini-Week

Departure base	Saturday	Arrival base
Lutzelbourg	Xouaxange	Lutzelbourg
Lutzelbourg	Saverne	Lutzelbourg

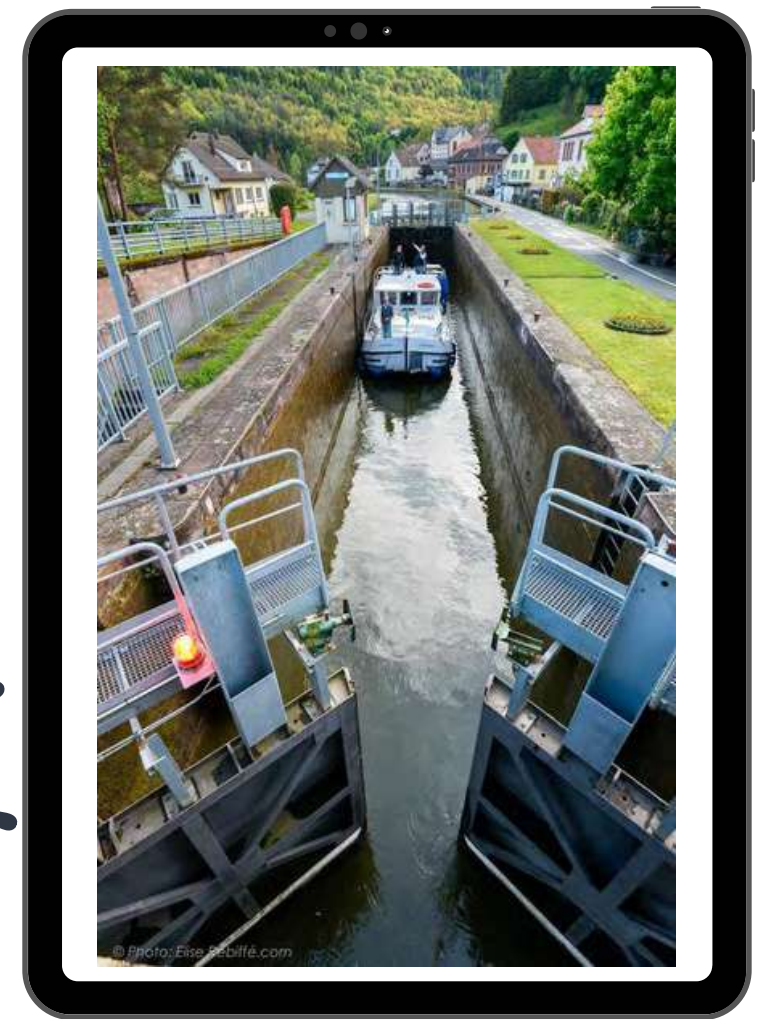
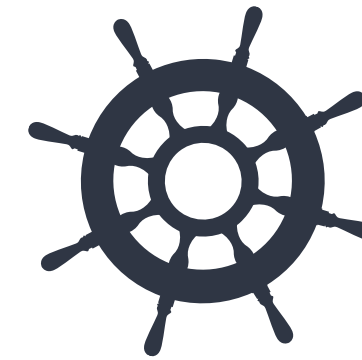
Departure base	Tuesday	Wednesday	Arrival base
Lutzelbourg	Niderviller	Ecluse n°1	Lutzelbourg
Lutzelbourg	Saverne	Bassin d'Altmuhle	Lutzelbourg



Lock Operating Hours :

	Canal de la Marne au Rhin Canal du Rhône au Rhin	Arzviller boat lift *	Canal des Houillères de la Sarre
Monday thru Saturday	7h -> 19h	10h -> 17h	8h30 -> 18h30
Sunday	7h -> 18h	10h -> 17h	8h30 -> 18h30

* Until 6 p.m. in July and August -Closed on May 1st



The locks on the Marne-Rhine Canal, the SarreCanal and the Vosges Canal are automatic and are operated by the Lock keepers themselves.

Lower a crew member ashore before the lock to walk to the controls. Entry into the lock takes place when the green signal is indicated. Your crew member should always stay by the control panel during the lock passage, ready to press the red stop button in the event of an emergency.

Mosellelocks are automatic and operated by lock keepers, permanent or touring. It is preferable to lower a crew member ashore before the lock, so that they can receive the mooring ropes once the boat is in the lock.

Do not hesitate to consult our tutorial with the following link: www.youtube.com/watch?v=86u8vRiGjKE

Quick History Points:

Arzviller boat lift:

The Plan Incliné of Saint-Louis Arzviller is a boat lift/elevator, unique in Europe, which has been in service since January 27th, 1969. Situated on the Canal de la Marne-au-Rhin, it lets you cross the threshold of the Vosges mountains by river. It replaces a scale of 17 locks succeeding each other over 4 km, which once used to take a whole day of navigation to pass through.

For more information about this, flash the code!

Le chateau des Rohans (Rohans Castle):

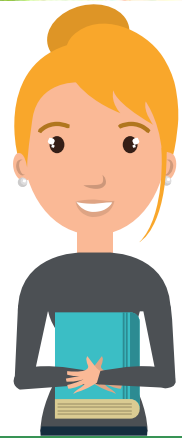
The majestic Château des Rohan, with its immense neoclassical facade, offers testimony to the role of Saverne. Since the beginning of the Middle Ages, the town has been the property of the Strasbourg episcopate, meaning it belongs to the Bishop of Strasbourg. The structure visible today is a restoration of the building commissioned by Cardinal Louis-René-Edouard de Rohan-Guéméné. To learn all about its history, flash the code!



Discovering the Canal de la Marne to the Rhin and the Canal du Rhône to the Rhin—direction East

Lutzelbourg:

A pretty, floral village, renowned for its Maison Wurm, which has perpetuated the art of crystal cutting over generations and exhibits some of their finest creations. Perched atop a rocky bluff, explore the ruins of the ancient castle built in the 11th century. There, you can gaze upon a magnificent panorama of the village, the canal and the surroundings. The cycling path along the canal passes through Saverne and leads to Strasbourg.



Hochfelden:

This small village is the headquarters of the Meteor brewery, created in 1640 and which produces 320 hectoliters of beer every day. This family business is the world's largest branded brewery independent from France. It opens its doors to visitors from Wednesday to Sunday for guided tours. The Pays de la Zorn museum, housed in the old synagogue, lets you discover the daily life of the region, which has been inhabited for over 7,500 years



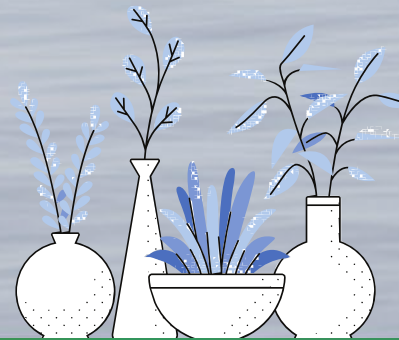
Alcohol abuse is dangerous for your health. Drink in moderation!

Discovering the Canal de la Marne to the Rhin River & Canal du Rhône to the Rhin(heading West)



Niderviller

In the 18th century, Niderviller became famous for its Earthenware. Its creations are now exhibited in many museums in France (including the Louvre in Paris) and around the world. Visit the store which sells a whole range of items, from dish sets to simple cup service, and exhibits a very fine collection of old earthenware and porcelain.



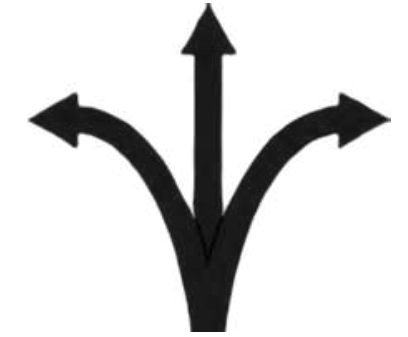
Gondrexange :

Created in the Middle Ages, the lake is ideal for swimming, water sports and pike, pike perch and carp fishing (fishing license required). Make a stop at Les Mouettescamp site, to access the beach and rent windsurf boards and canoes.



Our base

Lutzelbourg



Locaboat Holidays
Le Port Amont
7 rue de la Zorn
LUTZELBOURG, FR 57820

✉ lutzelbourg@locaboat.com
Tel: +33 (0)3 87 25 70 15
GPS: N 48°43'53.70" E
07°15'02.96"

Access to the base :

A4 –E25 exit 44 Phalsbourg, then N4 and D38 to Lutzelbourg(5 km)
Lutzelbourg Train Station (1 km)
Saverne Train Station (11 km)
Strasbourg Entzheim Airport (77 km)

