

Follow LocaboatHolidays on:



Bourgogne
Franche Comté



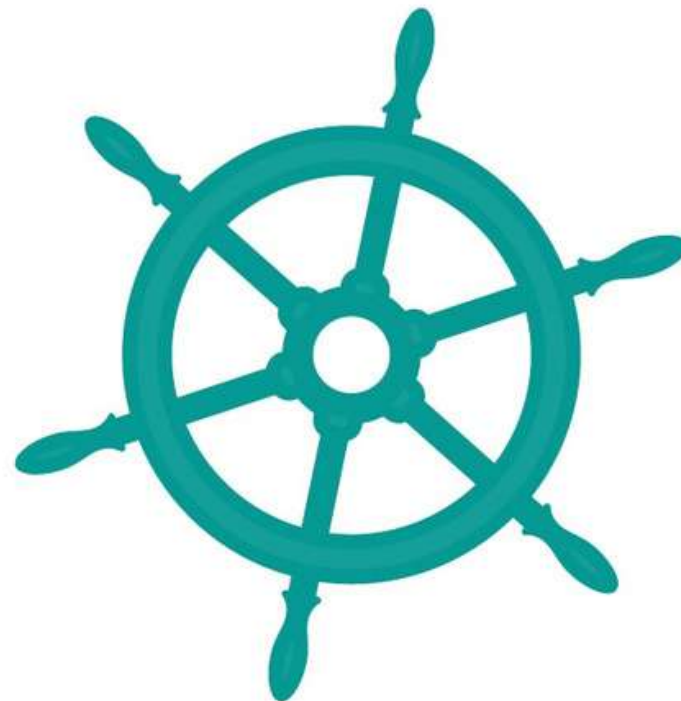
Navigation Guide

LOCABOAT
holidays

Useful tip: download a QRCodeApp

The Canal du Centre

Town	Navigation Time	Number of Locks
Canal du Centre (heading South)		
St Leger sur Dheune		
St Julien sur Dheune	4h35	11
Montchanin	3h20	8
Montceau les Mines	4h25	9
Génelard	4h30	6
Paray le Monial	5h30	8
Digoin	2h50	3



Town	Navigation Time	Number of Locks
Canal du Centre (heading North)		
St Leger sur Dheune		
Santenay	2h30	4
Chagny	1h	/
Rully	1h30	3
Fragne	3h20	8

The Saône River

Town	Navigation Time	Number of Locks
Canal du Centre (heading North)		
St Leger sur Dheune		
Santenay	2h30	4
Chagny	1h	/
Rully	1h30	3
Fragne	3h20	8
Saône (heading South)		
Chalon sur Saône	2h30	/
Gigny sur Saône	2h45	/
Tournus	1h45	1
La Truchère	45 min	1
Mâcon	3h30	/
Jassans Riottier	3h30	1
Trévoux	40 min	0
Lyon	2h38	1



The Seille River

Town	Navigation Time	Number of Locks
Canal du Centre (heading North)		
St Leger sur Dheune		
Santenay	2h30	4
Chagny	1h	/
Rully	1h30	3
Fragne	3h20	8
Saône (heading South)		
Chalon sur Saône	2h30	/
Gigny sur Saône	2h45	/
Tournus	1h45	1
La Seille		
La truchère		
Cuisery	1h	1
Branges	3h	2
Louhans	1h	1

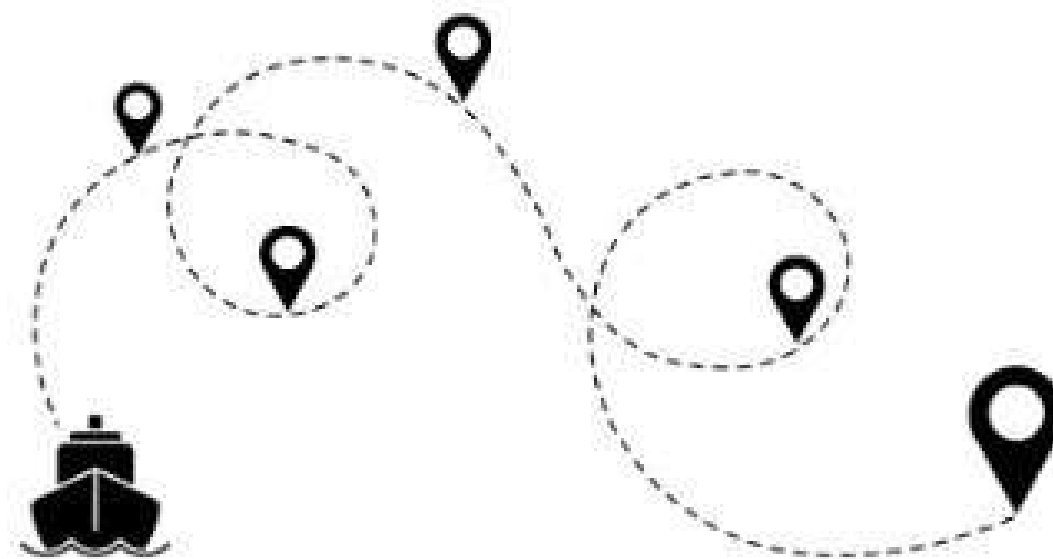




Suggested routes when departing from Saint Leger sur Dheune.



Departure base	Day 2	Day 3	Day 4	Day 5	Day 6	Arrival base
St Leger sur Dheune	St Julien sur Dheune	Montchanin	Montceau les Mines	L'Abbaye à Santenay	Chagny	St Leger sur Dheune
St Leger sur Dheune	Chagny	Chalon sur Saône	Tournus	Port d'Ouroux	Chagny	St Leger sur Dheune



Information about the Locks

On the SôneRiver, between St-Jean-de-Losneand Mâcon, the locks are automatic and operated by a lock keeper.

On the SeilleRiver, the locks are manual and operated by the boaters.

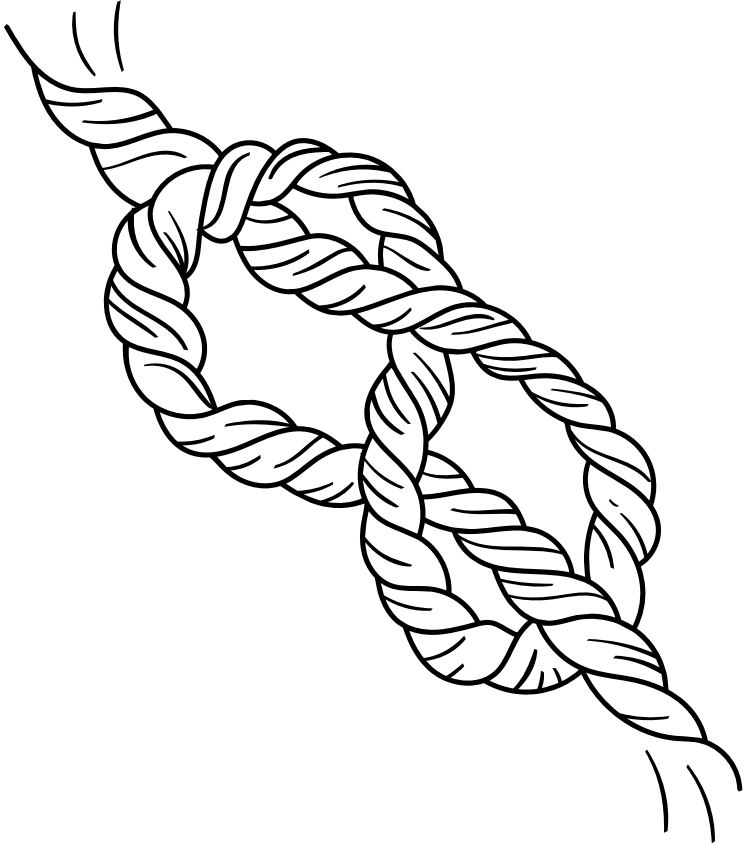
Most of the locks in this region are automatic and operated by the boaters themselves; they are triggered by rotating a “percherod” suspended above the stream or by passing in front of a sensor located on the bank.

For more information, please see the navigation guide.

Do not hesitate to consult our tutorial with the following link : www.youtube.com/watch?v=86u8vRiGjKE



LA SAONE	CANAL DU CENTRE, SEILLE
9am -7pm	9am -6:30pm
<p><i>The locks are closed May 1st and July 14th (except on the SeilleRiver)</i></p>	



Quick History Points:

The CuiseryBooksellers:

17 book professionals are located in the old shops in downtown Cuisery, who welcome you all year round. Booksellers, second-hand booksellers, record stores, antique dealers, book artisans and artists await your visit. Created in July 1999, the association "Village du Livre de Cuisery" promotes and develops this "village of books". Every first Sunday of the month, there is an organized book market.

To know more about this book haven, flash the code!



Bonaparte "cut his teeth" here !

The Santenyestate (now castle) was gradually acquired by the De Bessefamily. Their descendants, the De la Perrière family, built this castle in 1868. It is built of limestone and slate. The house is typical of the 19th century and has a taste of eclecticism in its architectural style. We notice, for example, the neo-medieval style bell towers.

Open to the general public as a rental for special events, which can be reserved through its online boutique For more information, flash the code!



Discovering the Canal du Centre (heading South)



Saint Léger sur Dheune:

If you appreciate good wine, the base of Saint Léger-sur-Dheune will delight you in every way.

Going down the Canal du Centre, you will cross the most prestigious vineyards of Burgundy such as Côte de Beaune and the Côte Chalonnaise.

Along the Dheune valley, Mercurey, Santenay, where the 13th century St-Jean-de-Narosse church dominates the vines, Montrachet, with its famous white wines or Rully and its 12th century castle, all produce famous wine vintages .

HELLO
ALOHA
BONJOUR
HOLA



Montchanin:

This town is located in the heart of the Saône et Loire, surrounded by low altitude mountains which form the granite mountains of Charolais and Autunois, close to the famous Burgundy wine trail. With activity zones and artisanal craft areas, as well as various shops, a weekly market (every Wednesday morning in the town center), plus hotels and restaurants which offer you a warm welcome from the Montchaninois.





Montceaul Mines :

Bestowed with many public facilities and services, as well as benefiting from magnificent green and natural spaces, Montceau offers a quality living environment. It is the youngest town in the department of Saône-et-Loire, -150 years old in 2006 -, the town of Montceau-les-Mines has managed to preserve its identity, its heritage while being resolutely turned towards the future. The town is colorful with its repainted facades thanks to a color plan implemented in 1995.



Génélard :

At the crossroads between MontceauLes Mines, ParayLe Monial, Charollesor Gueugnon, the Canal du Centre flows through the commune of Génélard. Its Basin offers you a pleasant setting, close to the Cultural and Touristic center and the town center. The lock keeper house N.15 Océan has been transformed into a lodge. Parking at the nautical stop is free but must not exceed 72 hours.



Parayle Monial:

Paray-le-Monial is located in a preserved environment. This ancient town offers you a real break sure to make your stay in Saône-et-Loire enchanting

The cobbled streets of the historic center evoke the town's medieval past. They invite you to stroll from the Town Hall, which is adorned with an Italian facade, to the Hiéronmuseum, the town's essential monument, while passing by and remarking the half-timbered houses or the Saint-Nicolas Tower. On the pedestrian streets, the shops of the town center invite you for some shopping.



Digoin:

By taking the greenway, you'll notice a feat of civil engineering via the Canal Bridge overlooking the Loire. You continue your journey through small country roads to Chassenard to discover the Chateau de La Croix

(Castle of the Cross) and its remarkable park but also Roman art through a 12th Century Roman Tympanum. Take the opportunity to visit the "ObservaLoire", a beautiful museum dedicated to the Loire and the canals situated next to the canal bridge.



Discovering the Canal du Centre (heading North)

Saint Léger sur Dheune:

If you appreciate good wine, the base of Saint Léger-sur-Dheune will delight you in every way.

Going down the Canal du Centre, you will cross the most prestigious vineyards of Burgundy such as Côte de Beaune and the Côte Chalonnaise.

Along the Dheune valley, Mercurey, Santenay, where the 13th century St-Jean-de-Narosse church dominates the vines, Montrachet, with its famous white wines or Rully and its 12th century castle, all produce famous wine vintages .



Santenay :

Santenay is a charming locality of a thousand inhabitants, leaning against the mountain and exposed to the south, which lives to the rhythm of the vine and the wine. Santenay has been a Spa & Health Resort since 1968. Its beneficial waters -the most lithinized in Europe -and its fabulous wines create conditions conducive to a certain sweetness of life. Lovers of strolls and walks are seduced by the beauty of its slopes and by the panoramic view offered at the top of Mont de Sène, also called Montagne des Trois Croix (the mountain of three crosses). Saint Jean de Narosse, a 13th century Romanesque church, attracts specialists in Burgundian religious art, while the Casino de Santenay and its slot machines attract gambling enthusiasts.



Chagny :

Located between the Côte de Beaune and the Côte Chalonnaise, Chagny progressively attracts more and more curious tourists. Chagny, a Green Holiday resort and renowned gastronomic stopover, will seduce you with its many facets. Discover a rich cultural heritage (St Martin's Church, Apothecary, etc.), green tourism thanks to the "VoieVert" (Green Way) which runs along the Canal du Centre, as well as numerous hiking trails between the vineyards and hills.



Rully:

Rully, a town nestled in lush greenery at the foot of Mont Varot and its famous caves of Agneux, boasts a splendid Napoleon III medieval castle, a 14th century church and numerous bourgeois houses. Cycle loops starting from this green way take through the village and on the reliefs of Rully. The GR 76 hiking trail crosses the west of the town and passes successively through limestone lawns, with forests and valleys covered with vines. Rully is also part of the routes of Saint Jacques de Compostelle.



Fragnes:

Welcome to Fragnes-La Loyère, a charming town located a few kilometers from Chalon-sur-Saône. Bordered by the Canal du Centre, river tourism enthusiasts will enjoy this nautical stop (Halt nautique), offering many services. Shops (bakery, restaurant, hairdresser), greenways, will allow you to spend a pleasant stay at the gates of the Chalonnaise coast and its renowned vintage wines.





Discovering the Saône River (heading South)

Gigny sur Saône:

5 km east of Sennecey-le-Grand, this village has lived to the rhythm of the Saône River since its origin: an ancient port from Roman times, then shifted to water coaches until the creation of major highways, and it is now frequented by river tourism thanks to the development of an old lock house which has become a popular nautical stopover (restaurant, pontoon, boat rental).

A little further in the hamlet of Epervièreyou will find a castle hosting a 4-star campsite, and a 19th century neo-Romanesque parish church.



Chalon sur Saône:

Architecturally, Chalon-sur-Saône is a feast for the eyes! The town center is full of half-timbered houses, towers and turrets, fortifications and strongholds from the 16th century. Among the must-sees are the

Ile St-Laurent hospital and its chapel, as well as the 15th century Episcopal palace. The beautiful cathedral square is lined with cafes, restaurants and antique shops. The fascinating museum dedicated to the inventor of photography, Nicéphore Niépce, showcases the first cameras and first color photographs.





Tournus :

From the river, let yourself get carried away by the charming, steep and picturesque streets lined with 16th century houses. On the heights of the town is the St-Philibert Abbey, a true masterpiece of Romanesque art. Discover a unique collection on the evolution of cycling over the centuries at the Bicycle Museum. More than a simple shop, the “Caves de Vignerons de Mancey” cellar is a true initiation and cultural journey around the various Burgundy appellations and grape varieties. You have the opportunity to participate in a wine tasting with commented explanations.

La Truchère:

The Seille River is a paradise for nature lovers. Indeed at the confluence of the Seille and the Saône Rivers, at the junction of the hiking trails of Bresse and the Saône valley, La Truchère offers you the charm and calm of its greenery and its lakes. The nature reserve offers an astonishing diversity with its sand dunes, its forest and its marshy pond.

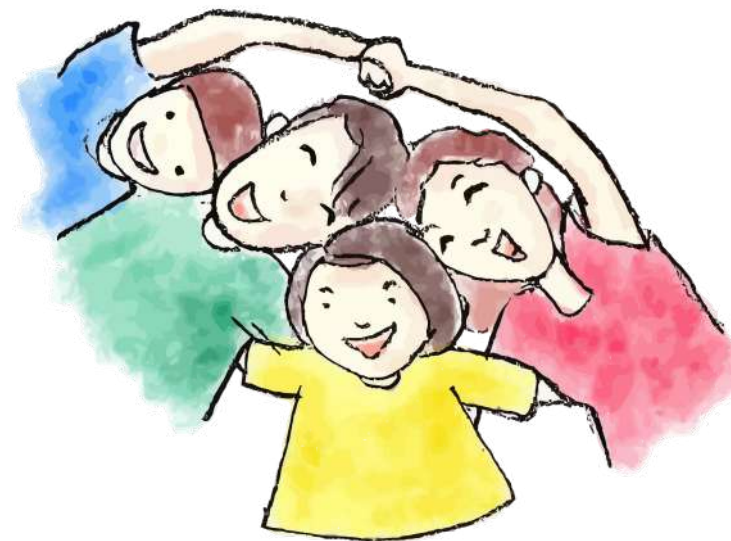
Two hiking trails, free to public access, let you to discover this rich landscape.



Mâcon :

Mâcon is one of the oldest towns in France and the capital of the South of Burgundy. Following the religious wars, there are not many relics of its past left. One curiosity to see is the Maison de Bois, built between 1490 and 1510, and certainly the most famous house in town. Its wooden facade is adorned with a multitude of statuettes of a rather naughty inspiration.

Stroll through town and you will see the St-Pierre church with its two bell towers of rare elegance. Don't miss a visit to the Hôtel-Dieu and its apothecary which has retained its original décor, to immerse yourself in the pharmaceutical world of the 18th century.



Jassans-Rottier :

Jassans preserves its assets, such as the town's leisure park, a great place for family walks, a sports course for amateurs to train, and a play area for the children. All of this is embellished with towpaths stretching over 4 km from the banks of the Saône. Jassans offers a pleasant living environment, the right balance between nature and urban living.

There's a market every Saturday morning from 8 a.m. to 12 p.m. and an organic market on Wednesday afternoon from 3 p.m. to 6 p.m. There's the 1865 neo-Romanesque church, whose bell tower, covered with colored tiles, surmounts the town. The 11th century Gléteins castle, the dovecote of the 18th century Montplaisir domain, Rottier with its "poype" earth mound, the Jesuit building recently restored in the town center, are monuments not to be missed.

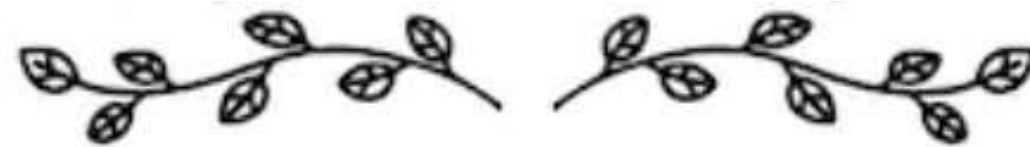




Trévoux

The "treasures" inherited from history, as well as its natural assets, make Trévoux a pleasant tourist destination. This town is labeled "The most beautiful detour in France", "Green station" and "Floral Town". It is also distinguished by the label "Land of art and history".

A pedestrian circuit "La Capitale de Dombes à pas contés" takes you on a discovery of historical sites. It is made up of numbered, explanatory signs affixed to remarkable buildings.



Lyon

Former capital of the Gauls and today's world capital of gastronomy, Lyon is sure to be a delight for the whole family. From Roman remains to the architectural style inherited from the Italian Renaissance, Lyon is rich in its historical heritage, as well as in its geographical location and its dynamism. So many treasures that make it one of the most attractive cities in Europe!

Standing in Lyon, you are at the heart of a territory of nearly five hundred hectares, where the entire history of Lyon has unfolded without interruption for 2,000 years.

During this entire period, this territory has remained inhabited, alive and lively.



The painted walls in Lyon

www.locaboat.com

Discovering the SeilleRiver..

La Truchère:

The SeilleRiver is a nature lover's paradise and La Truchèreis the first stop.

The nature reserve offers an astonishing diversity of natural surroundings with its sand dunes, its forest and its marshy pond. Two, freely accessible hiking trails let you explore this landscape.



Cuisery :

On your way to Cuisery, stop at Ratenelleif you care to visit the “Fermedu Champ Bressan”. This 1930’s farmhouse has not changed for 80 years (located 5km from the Romenaymooring).

Cuiseryhas ten bookstores and is one of the four “Village du Livre”(Book villages) in France. “EspaceGutenberg” old-time printing house explains and demonstrates old fashioned printing. From the top of the hill where the village is located, admire the view over the Bressevalley. The Biscuiserymill, by the river, invites you at tea time for a relaxing break.





Branges:

Welcome to Branges, a quiet and peaceful town with a dominating 14th century church. Branges extends on both sides of the Seille River from the neighboring Jura.

There's a myriad of shops in the village: 2 bakeries, a tobacco shop, a butcher-caterer, a mini-market, an eyewear optician, a hairdressing salon,

...

Take the opportunity to cycle along the banks of the canal and explore the area. You can also have a drink on the terrace at the village bar.

Louhans:

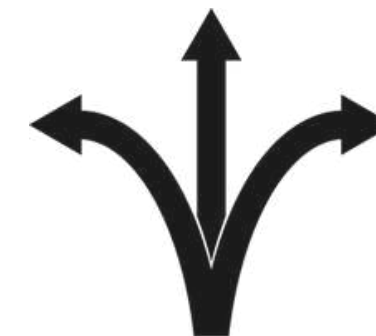


At the last stop of the Seille, visit Louhans before turning around. The town has a very beautiful church with its bell tower adorned with glazed tiles, and is characterized by its old archways which house many shops. The Monday market is a not to be missed event, with its quite famous cattle fair which takes place at Place du Champ de Foire, well known far beyond this charming little town. Taste Louhans' specialty: Corniottes, sweet little pastries.



Our Base

Saint Léger sur Dheune



Locaboat Holidays

Rue du Port

St-Léger-sur-Dheune, FR 71510



saint-leger-sur-dheune@locaboat.com

Tel: + 33 (0) 3 85 98 03 03

GPS: N 46°50'45.022 – E 04°38'1.623

Accèsbase :

- From the North or East : A6 to exit 24.1 Beaune, then D974 in the direction of Chagny/Santenay(28 km)
- From the South : A6 exit 25 Chalon-sur-SaôneNord, then D978 in the direction of Autun/Mercurey(20 km)
- GarerégionaleSaint Léger surDheune-Regional Rail (2 km)
- GareTGV Le Creusot-MontchaninTrain station (17 km)
- Lyon St-ExupéryAirport(166 km)